

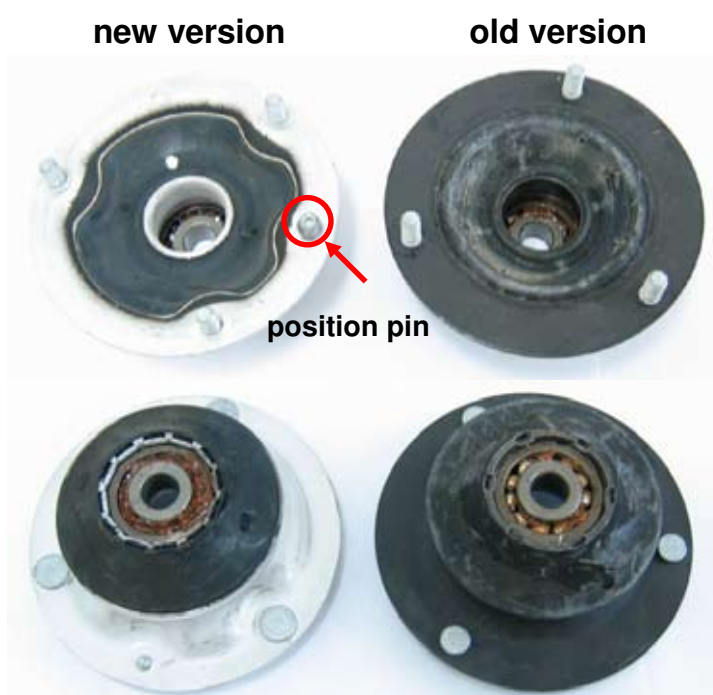
## Important Service Bulletin

01/2006 GB

- Workshop consulting  Trade partners
- Quality engineering  Workshop-partners



### Shock absorbers: BMW strut mount E36 / Z3 / Z4 87-386-A



Part number concerned: **87-386-A**

The damper mount on front axle was replaced on the BMW models E36 and Z3. In addition to the visual difference, a position pin is located at the upper attachment surface. This pin is needed only in the Z4 model. Therefore, it must always be removed in the models **E36 and Z3**.

Unscrew the position pin to remove it.

If the pin is not removed in the models E36 and Z3 fastening is impossible.