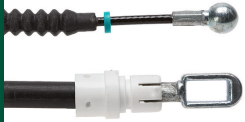


## Cables

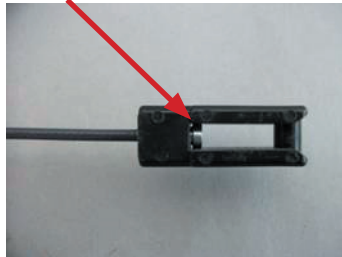
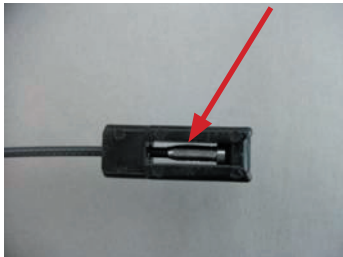
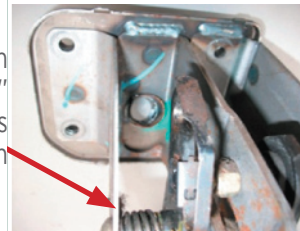


# FKC1476

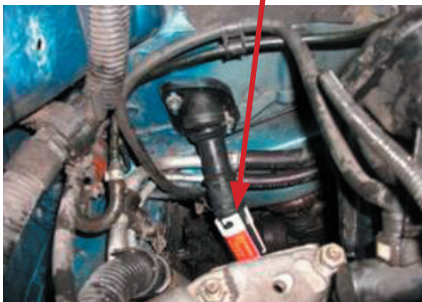
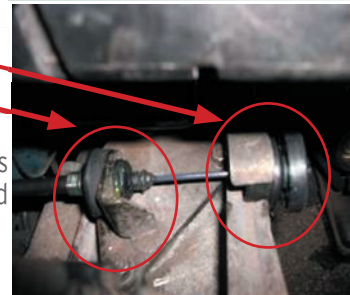
## Peugeot 206- All Models from 1998 to 2007 Auto-Adjust Clutch Cable Fitting Guide

CATB 0003

1. Fitting the new cable is essentially the reverse of the removal operation but care **MUST** be taken when fitting the new cable as the inner cable can be strained and bent past its maximum permissible bend radius. The new cable is fitted as follows;
2. Loosely feed the cable through the bulkhead towards the pedal box, fit cable into body clip middle of engine bay (nearest firewall grommet) - leave 2nd clip free - **DON'T BEND AUTO ADJUST** as this may break the retention cap.
3. Slide the cable end fitting up through the Firewall into the pedal box, through the tube towards the clutch pedal lever and push the Firewall Grommet "home" over the two retention studs and screw the retention nuts onto the studs "finger-tight" so as to hold the Firewall Grommet in place - care point! Tighten only up to 10Nm - Over tightening will crack the plastic auto adjust mounting.
4. From inside the vehicle slide the cable end fitting over the clutch pedal lever taking care to note the position of the cable inner wire inside the end fitting. Please note before fitting cable end over pedal, make sure spring retention clip is lifted to allow end fitting to be "hooked-on" pedal lever.



5. Fit gearbox cable end fitting into clutch actuation lever
6. Then push cable through slot in bracket and fit gear box abutment.
7. The Auto-adjust clutch mechanism can now be released as shown
8. below - **DO NOT REMOVE** the white plastic retaining cap until the cable is fully fitted i.e. the pedal and gearbox ends of the cable have been fitted correctly and that the cable routing is correct.



9. Release auto adjust mechanism by removing retention cap - fit cable into 2nd body clip

