

Cooling



Ford / Jaguar

Mondeo III 2.0TD, 2.2TD / X-Type 2.0TD

COTB 0002

FWP1948/FWP2063

Wear to PAS Splined Drive

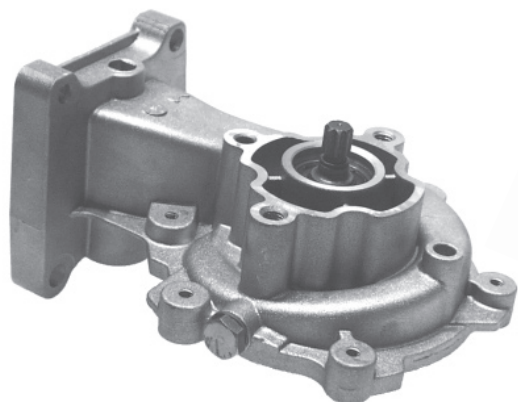
Examination of the condition of the splined drive from the Power Steering Pump **MUST** be made prior to the installation of a new Water Pump. If there is any evidence of wear the Power Steering Pump **MUST** be replaced at the same time as the Water Pump.

Remove all traces of old grease from the pump drive shaft splines then remove and discard the old 'O' ring seal. Fit the new 'O' ring and apply the contents from the grease sachet to the Power Steering Pump drive splines before fitting to the new Water Pump.

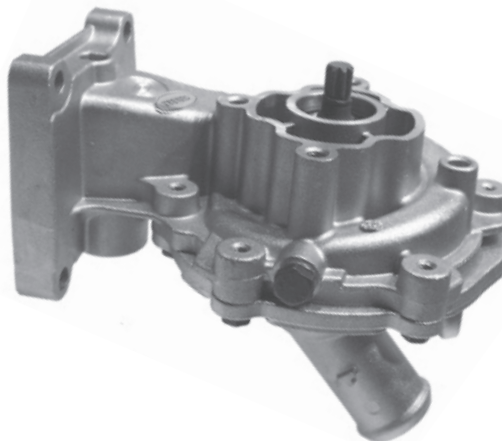
The 'O' Ring Seal and Grease sachet can be obtained by ordering First Line part number FWK001 (equivalent to Ford Service Part Ref. 1368570).

Replacement gaskets are also available - part no. FWP1948G.

Please refer to the Vehicle Manufacturers Technical Data for further information



FWP1948
Pump Only



FWP2063
Pump with backhousing

FIRST LINE 
THE ALL MAKES SPECIALIST

www.firstline.co.uk

TECHNICAL INFORMATION