

Cooling



General Motors

Chevrolet Captiva, Lacetti, Tacuma / Daewoo Leganza, Nubira, Tacuma Vauxhall / Opel Astra, Calibra, Frontera, Omega, Sintra, Speedster, Vectra, Zafira

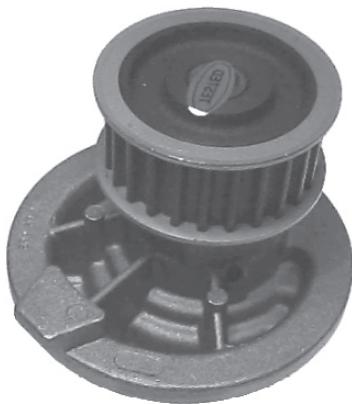
COTB 0006

'EVAPORISATION CHAMBER' SPECIFICATION CHANGE

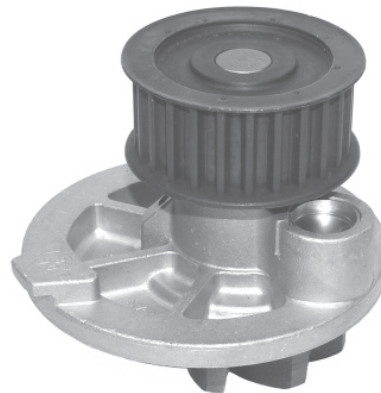
Following design and specification modifications by the Original Equipment manufacturer, First Line has superseded both **FWP1575** and **FWP2073** by a new reference:- **FWP2150**.

The new pump incorporates an 'Evaporisation Chamber' into the design and will fit all applications previously covered by both **FWP1575/2073**.

When viewed in profile, the **FWP2150** is much shallower in depth than the previous design, and care should be taken to ensure that the pump is correctly located in the engine block.



FWP1575/2073
old design



FWP2150
new design incorporating Evaporisation Chamber

FIRST LINE 
THE ALL MAKES SPECIALIST

www.firstline.co.uk

TECHNICAL INFORMATION