

Technical Bulletin

Toyota Hiace - Rear Differential Mount Bush Replacement

Applicable References: ADT380145, ADT38056C

Applications: Toyota Hiace, Granvia, Grand Hiace (Grey Import) all models 1995>

Date Issued: 10/2012

The Toyota Hiace and Granvia models (1995>) are fitted with an independent rear axle. The rear differential housing is supported by a large mounting that bolts between the differential casing and the chassis. This mounting has a bush at the chassis end to allow a certain amount of flexing/movement to cushion the forces applied by the drivetrain.

The bush is a weak point and it's common for it to wear, resulting in an increasingly noisy 'clonk' as you come on and off the throttle.

Toyota only sell the bush with the complete mounting, and Blue Print have been selling the same mounting since 2007 – part number ADT38056C.

Blue Print have available a replacement bush made from a much more durable Polyurethane which offers similar levels of compliance with a much longer life expectancy than the original rubber item. It also means you no longer have to change the entire mounting... just the worn part.

This high quality bush will last considerably longer than the original bush and is covered by our 3 Year Unlimited Mileage Warranty.

Below is a guide to replacing the differential mount bush.

Allow around 45 minutes to 1 hour to carry out the repair.

Note: Observe the layout of the original bush before starting the job. The longest part of the crush tube is towards the right hand side of the vehicle and the bush is flush to the mounting on this side yet protrudes slightly on the other side. You will also notice a 'flat' on the front lower area of the mounting's casting. This is the '6 o'clock' position which is referred to later.



Complete Mounting - ADT38056C



Polyurethane Bush - ADT380145



- First support the differential housing with a transmission jack or similar.
Then remove the front nut and bolt followed by the two rear nuts.
You will then have to lower the diff until the bolts can be removed from the top of the housing and the mounting can be lifted clear.

Continued over...



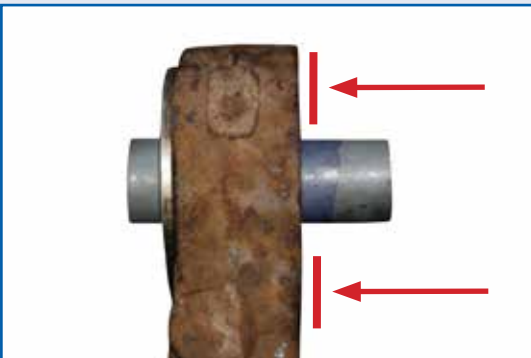
- Next, press the old bush from the housing using a suitable drift (62.5mm) and receptacle.



- Next, clean the mounting in preparation of fitting the new bush.



- Next, align the marking on the bush with the centre of the flat in the 6 o'clock position, ensuring the long side of the crush tube will be on the right hand side of the vehicle.



- Press the bush into place until right hand side of the bush (long tube) is flush with the mounting.



- Refitting of the mounting is the reverse of removal. Torque the two mounting to diff housing bolts to 123Nm and the front bolt to 118Nm.

- The replacement is now complete



www.blue-print.com
Blue Print is a bilstein group brand

Disclaimer: Any technical tips are produced in good faith. Ferdinand Bilstein UK Ltd. always recommend that vehicle maintenance and diagnostics are only carried out by suitably experienced people using appropriate tools in a safe manner within a workshop environment. Ferdinand Bilstein UK Ltd. and their customers cannot be held responsible for the correctness of, or misinterpretation of the above technical tips. Images shown are for illustrative purposes only and may not be representative of the products or vehicles described.