

Objective:

To help you to identify old core that is in such a condition that is acceptable for return back to Remy for our re-manufacturing process and identify units that should be rejected back to the customer.

The core criteria is a visual/mechanical inspection and at no time should the person inspecting the old core be expected to dismantle units.

Core returned on an exchange basis should be of the same application type as that ordered and returned in the original packaging.

Units which are mechanically damaged or in such a condition that they cannot be remanufactured should not be accepted, for example:

- Broken/ Damaged Casting/ Stripped Thread
- Excessive Wear
- Severe corrosion
- Missing Parts

We have included pictures showing examples of old core that should be rejected as they are unfit for our remanufacturing process.

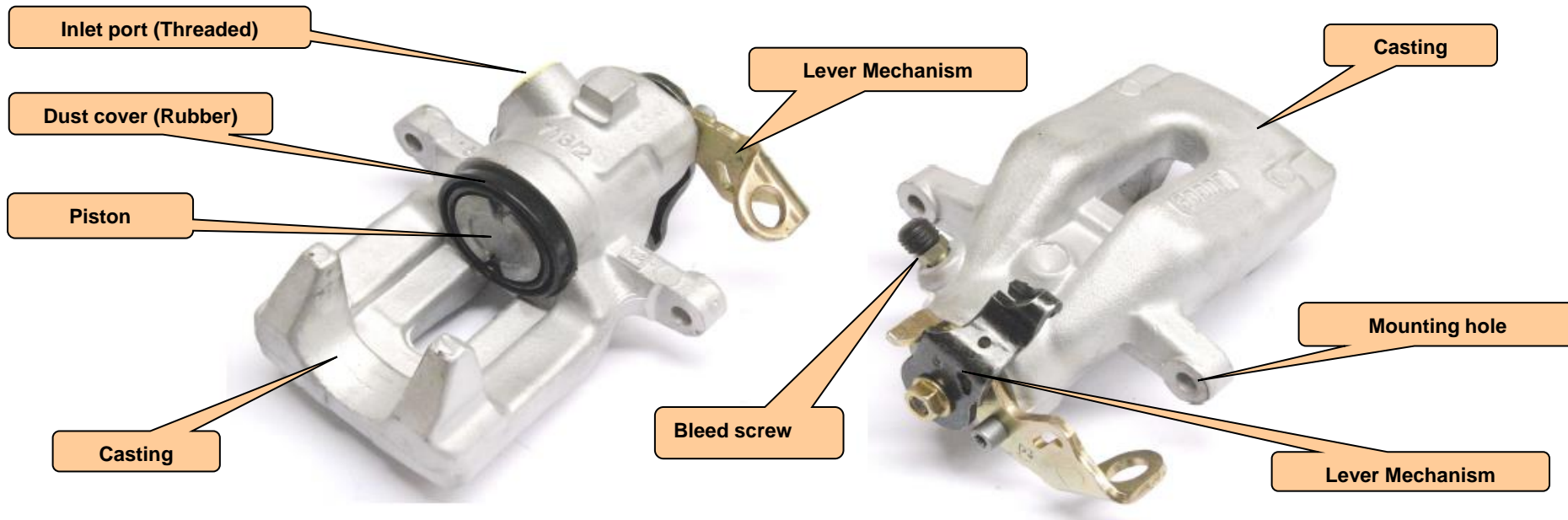
One important note is that in certain cases, the old core maybe mechanically damaged due to an external influence. In these cases we will explain the reason behind these failures and help you to understand the root cause so that if asked by your customer you can explain the reason/s to them as to why the core is being rejected.

Important note: The core must be completely removed from the box during inspection and the whole unit examined.

CALIPERS

An OLD CORE is a unit that has been removed from a vehicle due to it not working and has been replaced by a newly remanufactured unit. You will notice that in most cases it is just a dirty unit and there should be no evidence of damage and therefore be fit for return to Remy for remanufacturing.

The OLD CORE has been returned to you as there is a value attached to it. The value is called the surcharge.



A useful tool when you need to check to see if any major components are missing from a core, is to take a look at our Remy CD Rom or our online catalogue www.remyinc.eu It shows pictures of all our part numbers.



BROKEN/ DAMAGED CASTING/ STRIPPED THREAD

- ❖ Casting
- ❖ Thread

CALIPERS

BROKEN CASTING

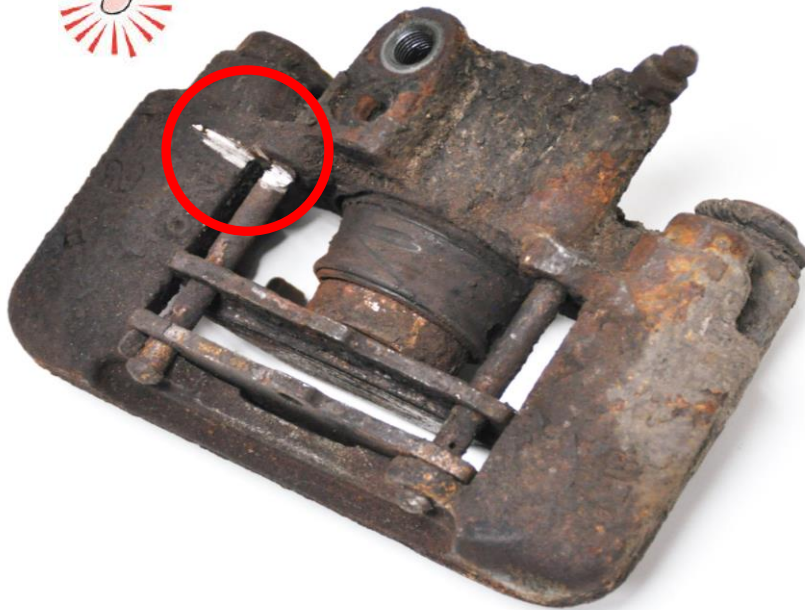


You will notice in the picture that the casting is broken where the pad retaining pin locates.

Due to a brake caliper being a safety critical product, Remy would not accept a core back for remanufacturing in this condition.

CALIPERS

DAMAGED CASTING

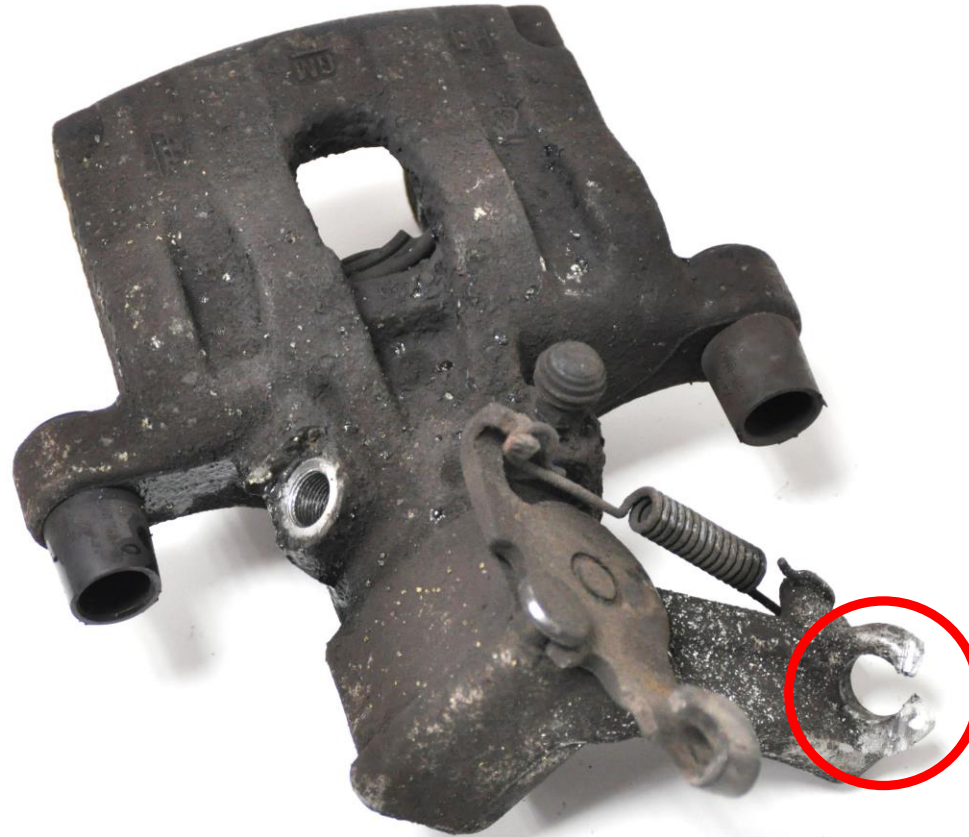


You will notice from the picture that the castings show evidence of grinding marks.

This is likely to have been caused during attempted removal of the pad retaining pin. Due to a brake caliper being a safety critical product, Remy would not accept a core back for remanufacturing in this condition.

CALIPERS

DAMAGED CASTING

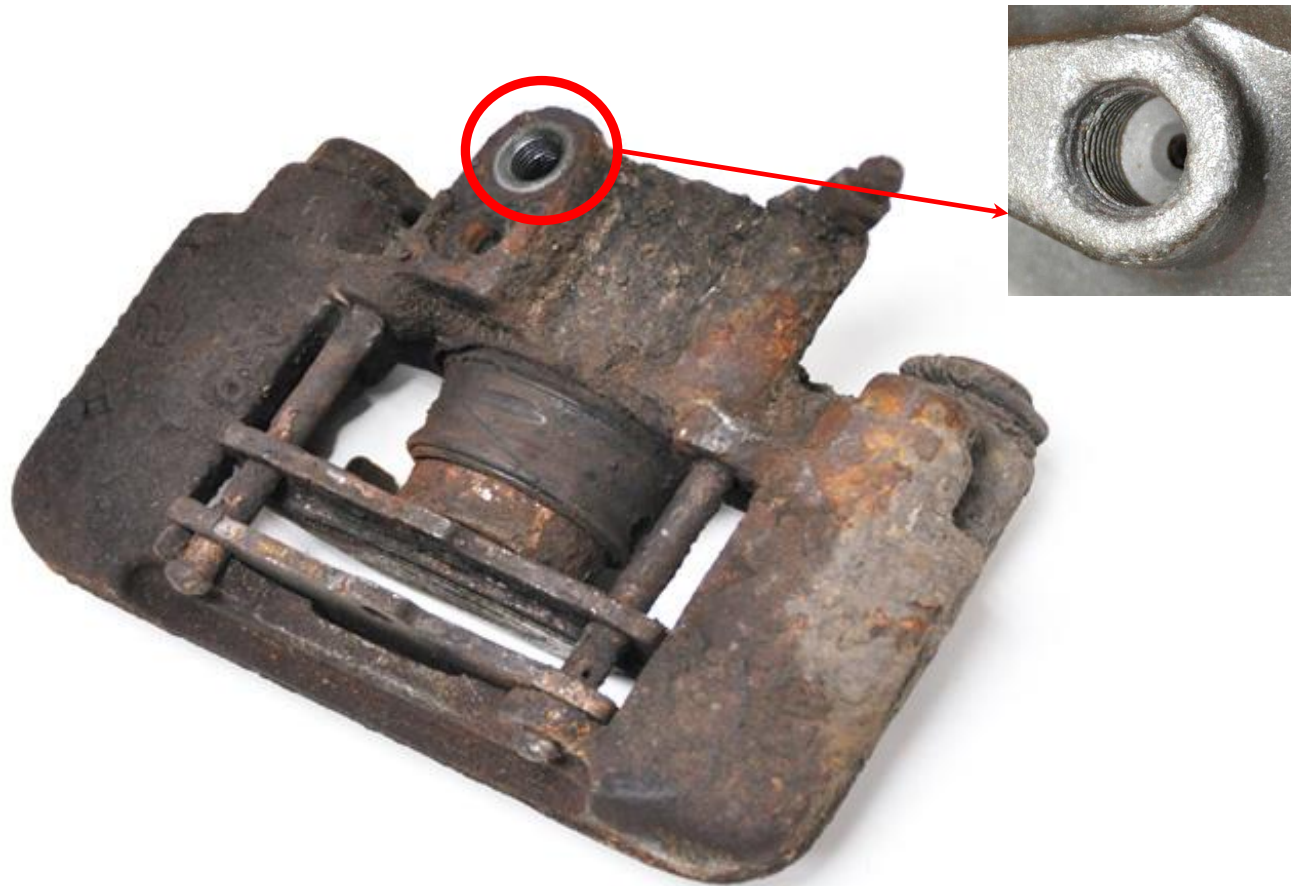


You will notice in the picture that the casting has been cut

This is likely to have been deliberately cut to remove the handbrake cable. Due to a brake caliper being a safety critical product, Remy would not accept a core back for remanufacturing in this condition.

CALIPERS

STRIPPED THREAD



You will notice in the picture that the inlet port thread is stripped/damaged.

Any stripped/ damaged threads will result in a rejected core.

Due to a brake caliper being a safety critical product, Remy would not accept a core back for remanufacturing in this condition.

EXCESSIVE WEAR

❖ Casting

CALIPERS

EXCESSIVE WEAR



You will notice from the picture that this caliper core has been damaged by the brake disc cutting into the casting.

This is likely to have been caused by the brake pad being worn to excess. Due to a brake caliper being a safety critical product, Remy would not accept a core back for remanufacturing in this condition.



SEVERE CORROSION

CALIPERS



SEVERE CORROSION



EXAMPLE



You will notice that caliper core pictured shows severe corrosion.

The inlet port face should be clean and free of corrosion. If there is evidence of corrosion on the port face then it is likely that the caliper has not recently been removed from the vehicle and should be rejected back to the customer.

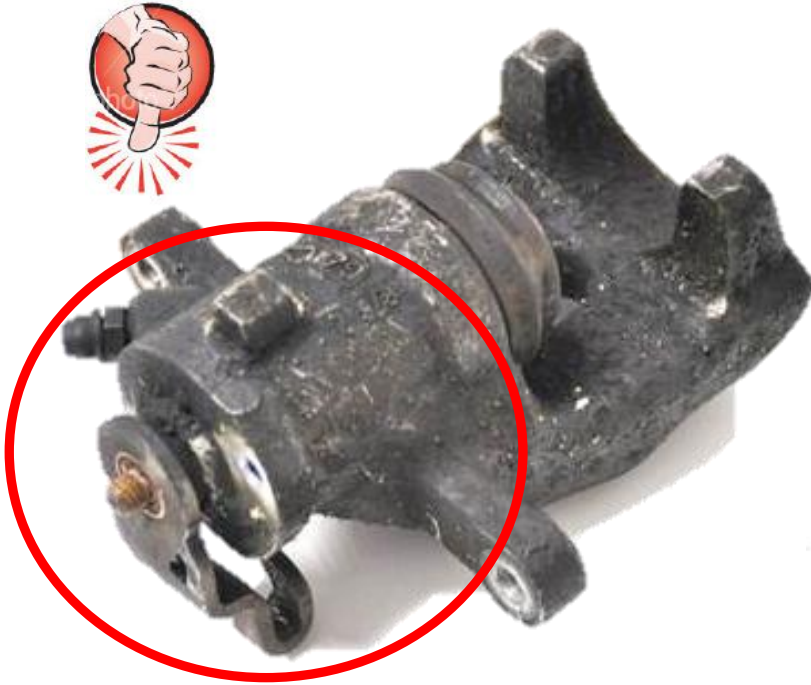
Remy would not accept a core in this condition for remanufacture as a brake caliper is a safety critical product.

MISSING PARTS

- **Lever Mechanism**
- **Piston**

CALIPERS

MISSING PARTS



You will notice in the picture on the left that part of the handbrake mechanism is missing.

The core must be returned to Remy as a complete assembly.

Due to a brake caliper being a safety critical product, Remy would not accept a core back for remanufacturing in this condition.

CALIPERS

MISSING PARTS



You will notice in the picture on the left that the piston is missing.

Due to a brake caliper being a safety critical product, Remy would not accept a core back for remanufacturing in this condition.

However if the piston has fallen out but is returned in the box with the caliper it is acceptable



ACCEPTABLE DAMAGE

- ❖ Snapped bleed screw

CALIPERS

ACCEPTABLE DAMAGE



You will notice in the picture that the bleed screw has been snapped off.

Remy **will** accept core back for remanufacturing in this condition UNLESS there has been an attempt to drill the snapped screw out of the casting and the drill has broken off inside.