

## Electric steering

### Criteria:

Identification

Completeness

Mechanical damage

Corrosion



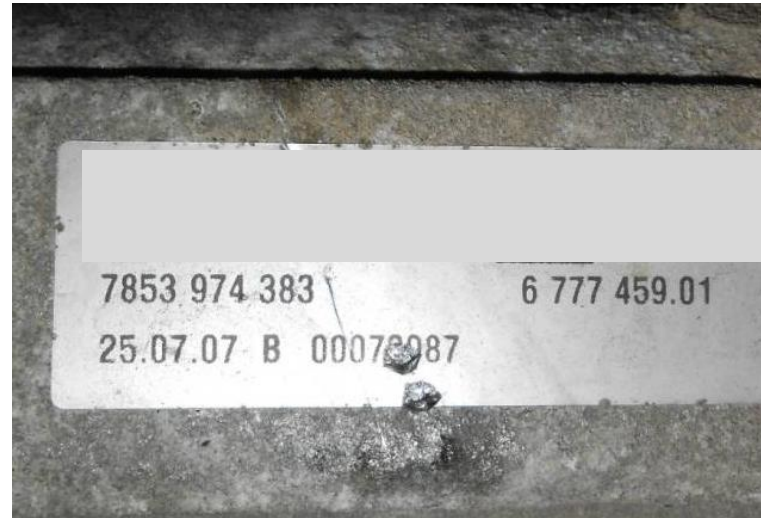
# Electric steering

## Criteria:

### Identification

Order of identification:

- Factory number on the part or
- Bosch exchange number (e.g. starting with 78...) on the part or
- Bosch exchange number (e.g. starting with 78... or KS...) on the box



Acceptable

## Electric steering

### Criteria:

#### Completeness

Opened engine housing,  
Housing lid missing is not  
acceptable



Not acceptable

## Electric steering

### Criteria:

#### Mechanical damage

1. Accident damage
2. Damage on electronic plugs
3. External repair
4. Common mechanical damage

## Electric steering

### Criteria:

#### Mechanical damage

1. Accident damage:  
Steering tie rod in same angle



Acceptable

## Electric steering

### Criteria:

#### Mechanical damage

1. Accident damage:  
Steering tie rod buckled,  
deformed or not in same angle



Not acceptable

## Electric steering

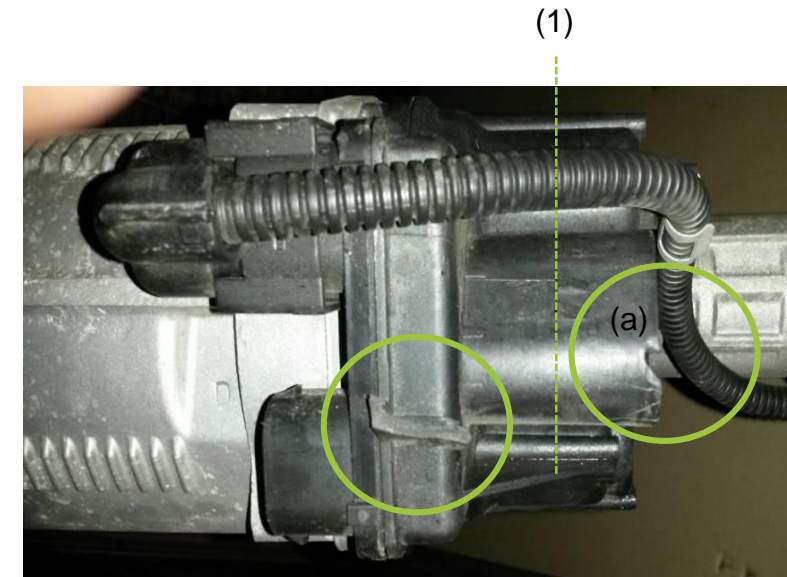
### Criteria:

#### Mechanical damage

2. Damage on electrical plugs:  
Plug broken (a) above rupture line  
(1) and broken nose (b) is  
acceptable



Acceptable



Acceptable

## Electric steering

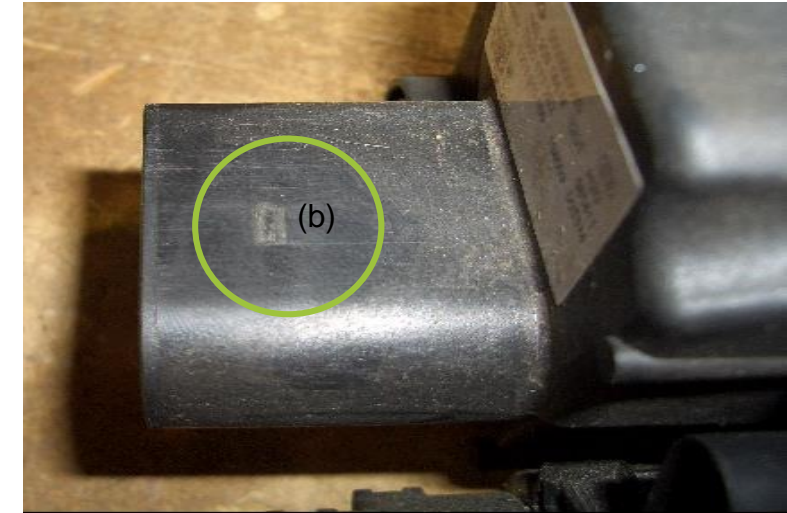
### Criteria:

#### Mechanical damage

2. Damage on electrical plugs:  
Plug broken (a) above rupture line  
(1) and broken nose (b) is  
acceptable



Acceptable



Acceptable



## Electric steering

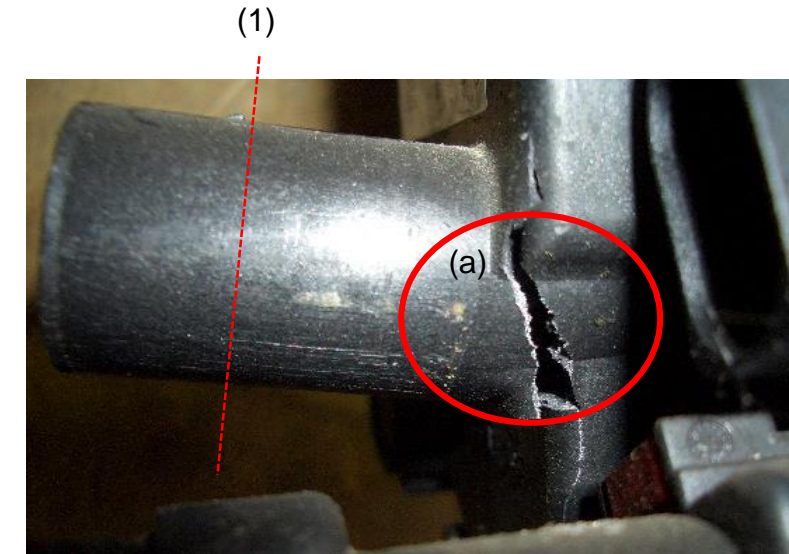
### Criteria:

#### Mechanical damage

2. Damage on electrical plugs:  
Plug broken (a) + (b) below  
rupture line (1) is not acceptable



Not acceptable



Not acceptable

## Electric steering

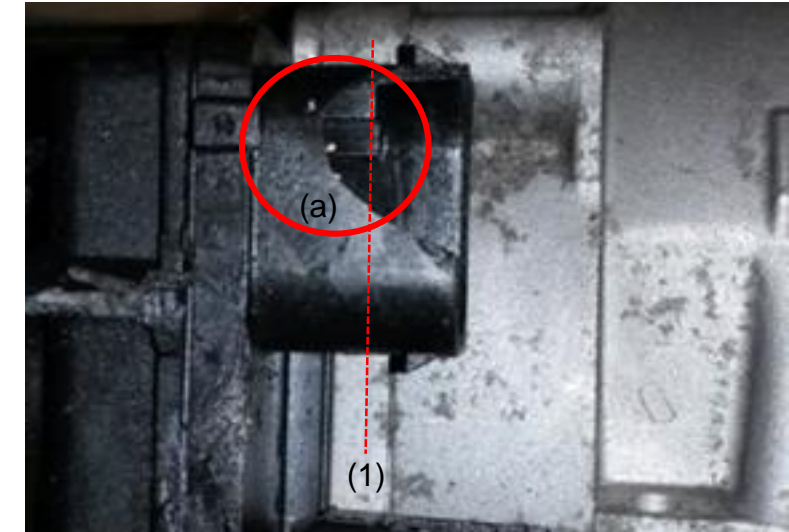
### Criteria:

#### Mechanical damage

2. Damage on electrical plugs:  
Plug broken (a) + (b) below  
rupture line (1) is not acceptable



Not acceptable



Not acceptable

## Electric steering

### Criteria:

#### Mechanical damage

3. External repair:  
Broken or welded steering tie rod is not acceptable



Not acceptable



Not acceptable

## Electric steering

### Criteria:

#### Mechanical damage

3. External repair:  
Broken or welded steering tie rod is not acceptable



Acceptable



Not acceptable

## Electric steering

### Criteria:

#### Mechanical damage

4. Common mechanical damage:  
Damaged housing is not acceptable



Not acceptable



Not acceptable

## Electric steering

### Criteria:

Mechanical damage

4. Common mechanical damage:  
Damaged housing is not acceptable



Not acceptable



Not acceptable

## Electric steering

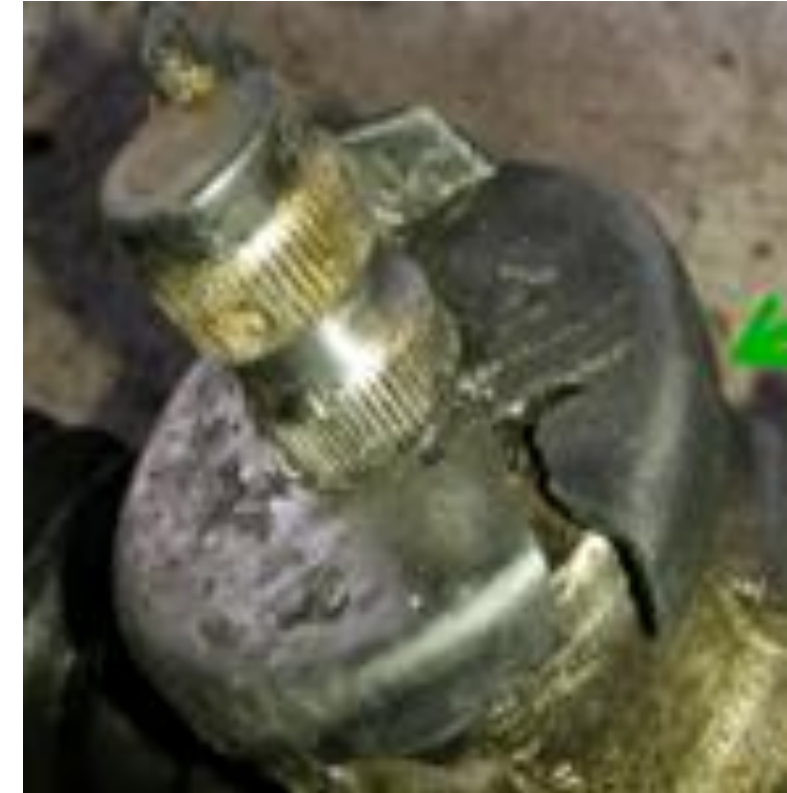
### Criteria:

#### Mechanical damage

4. Common mechanical damage:  
Damaged housing  
is not acceptable;  
Damaged plastic cap  
is acceptable



Not acceptable



Acceptable

## Electric steering

### Criteria:

#### Mechanical damage

4. Common mechanical damage:  
Damaged gearing is not acceptable



Not acceptable



Acceptable



## Electric steering

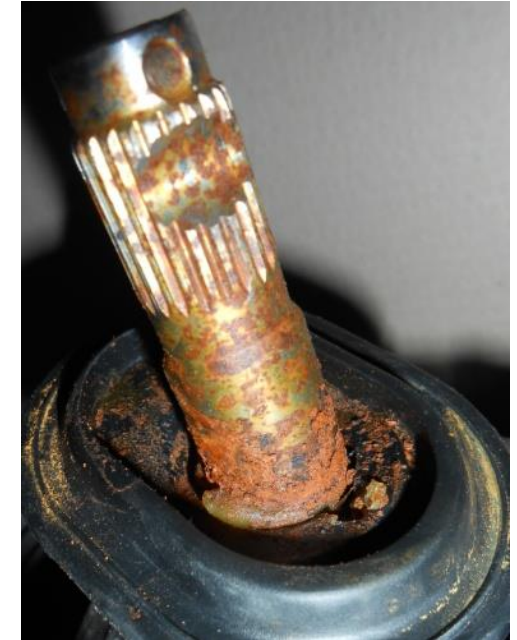
### Criteria:

Corrosion

Gearing heavily corroded is not acceptable



Acceptable



Not acceptable

## Electric steering

### Criteria:

#### Corrosion

Tie rod heavily corroded is not acceptable



Acceptable



Not acceptable

## Electric steering

### Criteria:

Corrosion

Trapped water drain valve:  
Water damage is not acceptable



Not acceptable