

| Post Equipment | Beep and Park | Suitability | All Makes

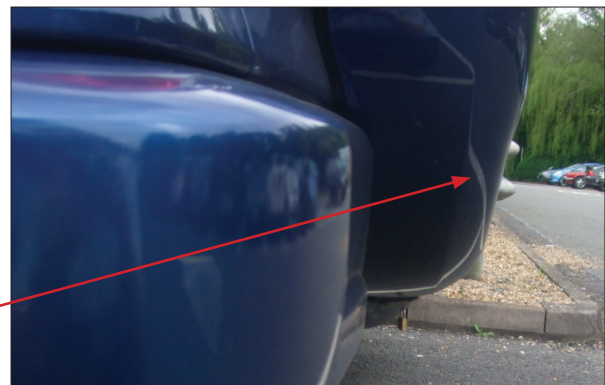
Confirming vehicle suitability for Beep and park kits

Valeo Beep and Park parking assistance kits are universal fit that can be mounted onto most vehicles. However there are vehicles that some, if not, all kits will not be suitable.

Here are examples of typical problems where some beep and park kits will not be suitable, however in cases 1 and 2 beep and park kit 3 (632002) will be suitable because of the facility to program the system to recognise objects permanently fitted to a vehicle that protrude further than the location of the sensors.

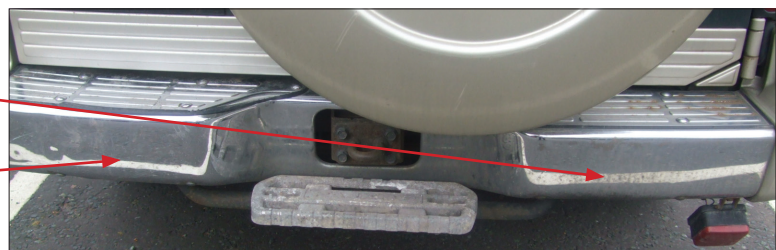


Vehicle not suitable for beep and park kit 1 (632000) and beep and park kit 2 (632001) due to having a tow bar fitted



Vehicle not suitable for beep and park kit 1 (632000) and beep and park kit 2 (632001) due to having a tow bar fitted

This vehicle will be unsuitable for any Valeo beep and park kits because the rear bumper is constructed from metal not plastic and will interfere with the sensors operation.



All Valeo beep & park kits are unsuitable for vehicles with a metal reinforced bar situated behind the plastic bumper.

When fitting a beep and park kit, please ensure the vehicle is completely suitable for the supplied kit.

Any concerns on a fitment, please contact Valeo Service Technical on 01527 516940.