

| Post Equipment | Beep and Park | Fitting | Mitsubishi Shogun

## Beep and Park fitting suitability

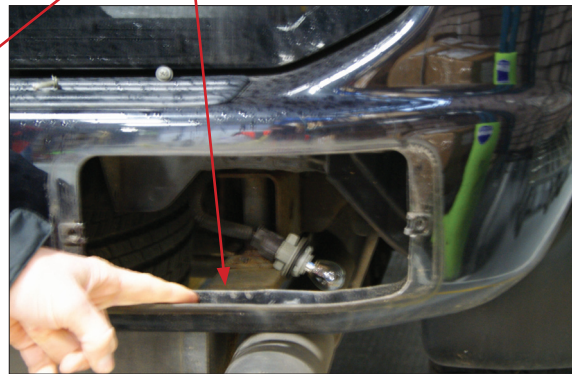
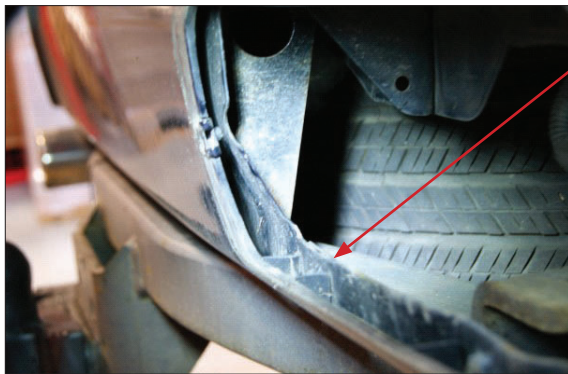
The Valeo beep and Park (B&P) parking aid is a universal fitment so is not suitable for all vehicles. The technical department was asked to check the feasibility of fitting a B&P system to a Mitsubishi Shogun Sport. After investigation, the B&P kit cannot be fitted to this vehicle for a number of reasons as show below.



Distance between bumper lights is too narrow

Curvature of the bumper is not suitable for a sensor in this location

Steel panel behind the outer plastic skin of the bumper



These limitations might also apply for other vehicles, it is important to check suitability for fitment of the B&P kit before commencing installation.

If you have any queries about the installation of the B&P kit onto a particular vehicle, please contact the Valeo Service UK technical department on 01527 838300, option 2.