

| Wiper blade | Fitment | Design Change | Renault Scenic II

## Change in wiper blade fitment design between 12/04 and 01/05

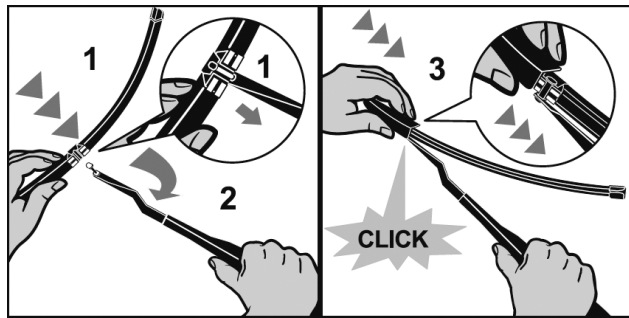
On Renault Scenic II models built between 05/03 > 05/09 there is a change in wiper blade fitment design between 12/04 and 01/05. Vehicles built up to 12/04 can be found registered during 2005, causing confusion when selecting the correct part.

This bulletin has been produced to ensure the correct wiper blade is provided to ensure the right wiper blade is supplied.

- On vehicles built between 05/03 and 12/04 the correct wiper blade to use is VM400. The wiper arm design and fitment are as below.



Wiper arm fitted to 05/03>12/04 Renault Scenic II models.

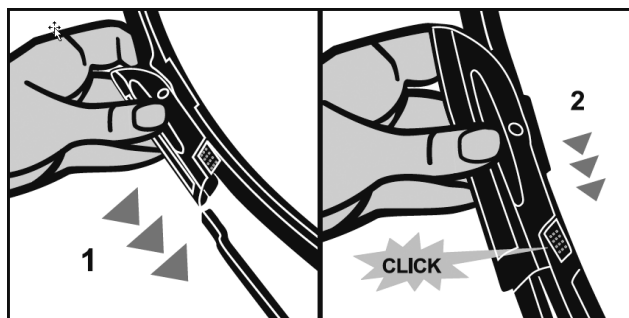


Fitting instructions of VM400

- On vehicles built after 01/05 the wiper blade to use is VM419. The wiper arm design and fitment are as below.



Wiper arm fitted to 01/05> Renault Scenic II models.



Fitting instructions of VM419