

Top 3 installation errors to avoid on kits 835035 and 828002

Grease contamination

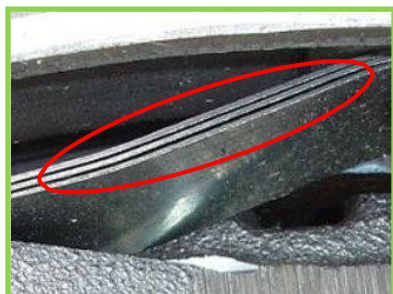
The Valeo Service warranty department receive a number of returned clutches with issues of juddering or slipping of the clutch. After inspecting the returned parts, there is clear evidence of incorrect, too much or incorrectly applied grease which has radiated from the drive plate hub from centrifugal force and coated the friction surface. Once the grease has come into contact with the friction surface, the coefficient of friction of the drive plate is reduced so it can no longer transmit all of the engine torque resulting in the effect of juddering or slipping. Always check the condition of the gearbox and the engine to prevent oil and other contaminants leaking into the gearbox.



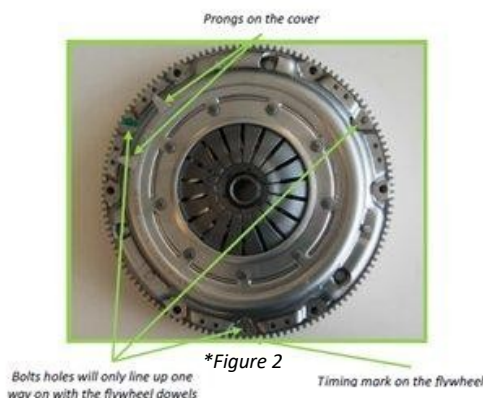
Use the grease applied in the kit sparingly

Fitment location of the clutch cover

The clutch cover in 828002 and 835035 can only be mounted correctly one way on to the flywheel dowels. It is important to identify that the timing mark on the flywheel does not need to be situated between the two prongs on the clutch cover (see figure 1). Failure to do mount the cover in the correct position and to the correct torque (check fitting instruction) can result in separated drive straps. A separation on the drive strap (see figure 2) will result in reduced pressure plate lift in this area of the cover, which may result in gear selection difficulties.



**Figure 1, separated drive strap*



**Figure 2*



**Figure 3, clutch ball pin, guide tube and release arm*

Incorrect preload to the release mechanism

The Valeo Service warranty department receive a number of returned clutches with issues of juddering or slipping of the clutch. After inspecting the returned parts, there is clear evidence of premature wear to the diaphragm fingers. This is a result of incorrect preload (the release mechanism being incorrectly set) to the release mechanism of the vehicle. This can be attributed to a number of commonly worn parts fitted to the vehicle including the clutch ball pin and clutch release lever (figure 3), the gear synchro hubs (in particular the third and fourth) and both gear wheels.

**Failure to check and replace where necessary will result in difficult gear change or vehicle judder and/or vibration.*