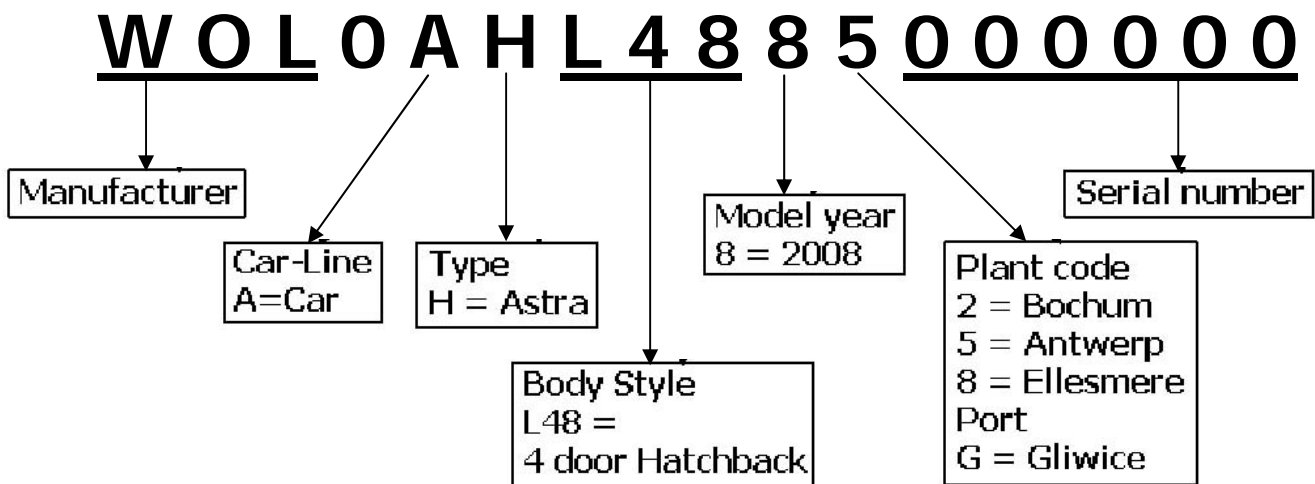


# CATALOGUE-INFO



## Vauxhall / Opel Chassis Change Points

To correctly identify the correct RepSet, CSC and Dual Mass Flywheel on some applications the catalogue refers to two digits of the chassis number. The two digits in question are the 10<sup>th</sup> and 11<sup>th</sup>. These represent the model year and production plant.



Example

WOLOAHL4885000000

The 8 shows the vehicle model year to be 2008 and 5 represents the production plant.

**For further information:**

Phone: +44 (0) 14 32 264 264\*  
Fax: +44 (0) 14 32 375 760  
Info@LuK-AS.co.uk  
www.Schaeffler-Aftermarket.com  
\* Calls from within the UK 08457 001100

