

16:02-23

Edition 1

Koordinator generation 4, med EDC S6

Coordinator generation 4, with EDC S6

Koordinator Generation 4, mit EDC S6

Coördinator generatie 4, met EDC S6

Coordinateur génération 4, avec EDC S6

Coordinador de la 4 generación, con EDC S6

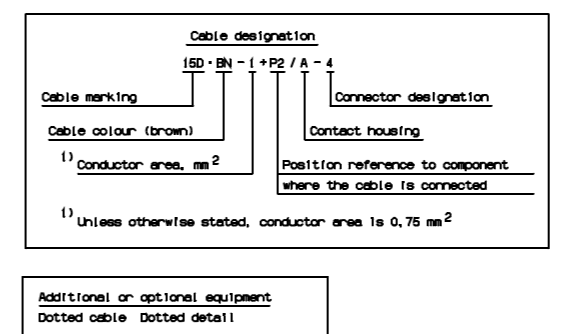
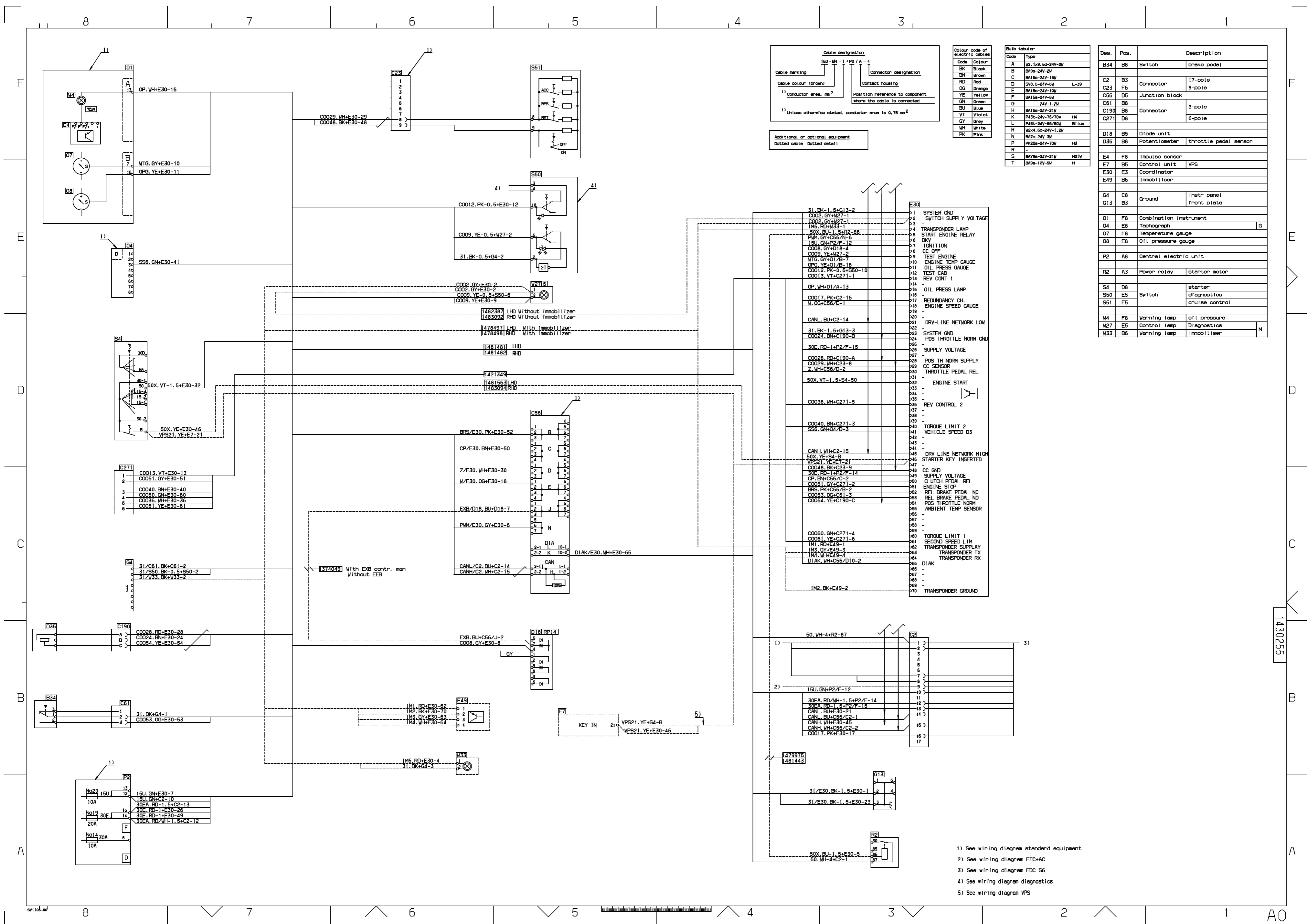
Coordenador geração 4, com EDC S6

Coordinatore generazione 4, con EDC S6

Koordinattoori sukupolvi 4, sis. EDC S6:n

Koordinator 4 generacji, z EDC S6

Координатор поколения 4, с устройством EDC S6



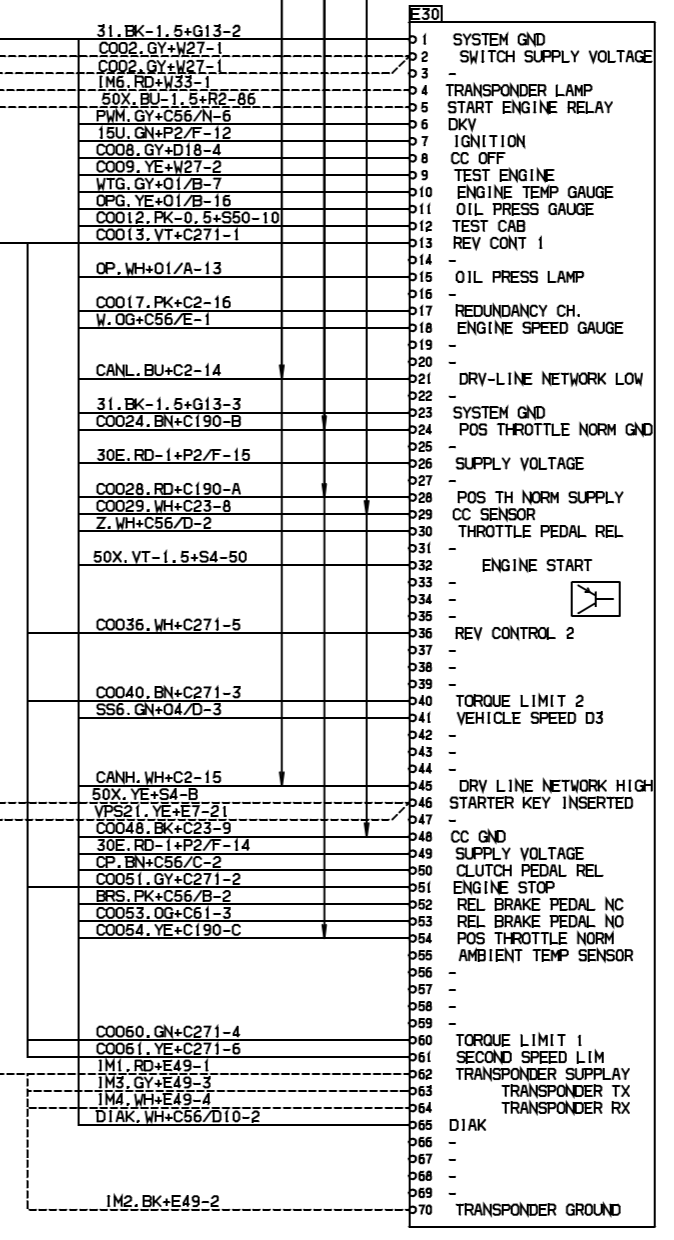
Colour code of electric cables

Code	Colour
BK	Black
BN	Brown
RD	Red
OG	Orange
YE	Yellow
GN	Green
BU	Blue
VT	Violet
GY	Grey
WH	White
PK	Pink

Bulb tabular

Code	Type
A	W2, 1x9, 5x24V-2W
B	BA9s-24V-2W
C	BA16s-24V-15W
D	SV8, 5-24V-8W Lx39
E	BA16s-24V-10W
F	BA16s-24V-8W
G	24V-1,2W
H	BA16s-24V-21W
K	P43t-24V-75/70w HL
L	P43t-24V-55/80w BL/UC
M	W2x4, 6x24V-1,2W
N	BA7s-24V-3W
P	PK22s-24V-70W HL
R	-
S	BA9s-24V-21W HL/W
T	BA9s-12V-5W H

Des.	Pos.	Description
B34	B8	Switch brake pedal
C2	B3	Connector 17-pole
C23	F6	Connector 9-pole
C56	D5	Junction block
C61	B8	Connector 3-pole
C190	B8	Connector 6-pole
C271	D8	Connector 6-pole
D18	B5	Diode unit
D35	B8	Potentiometer throttle pedal sensor
E4	F8	Impulse sensor
E7	B5	Control unit VPS
E30	E3	Coordinator
E49	B6	Immobilizer
G4	C8	Instr panel
G13	B3	Ground front plate
O1	F8	Combination Instrument
O4	E8	Tachograph
O7	F8	Temperature gauge
O8	E8	Oil pressure gauge
P2	A8	Central electric unit
R2	A3	Power relay starter motor
S4	D8	Switch starter
S60	E5	Switch diagnostics
S61	F5	Switch cruise control
W4	F8	Warning lamp oil pressure
W27	E5	Control lamp Diagnostics
W33	B6	Warning lamp immobilizer



- 1) See wiring diagram standard equipment
- 2) See wiring diagram ETC+AC
- 3) See wiring diagram EDC S6
- 4) See wiring diagram diagnostics
- 5) See wiring diagram VPS

1430255