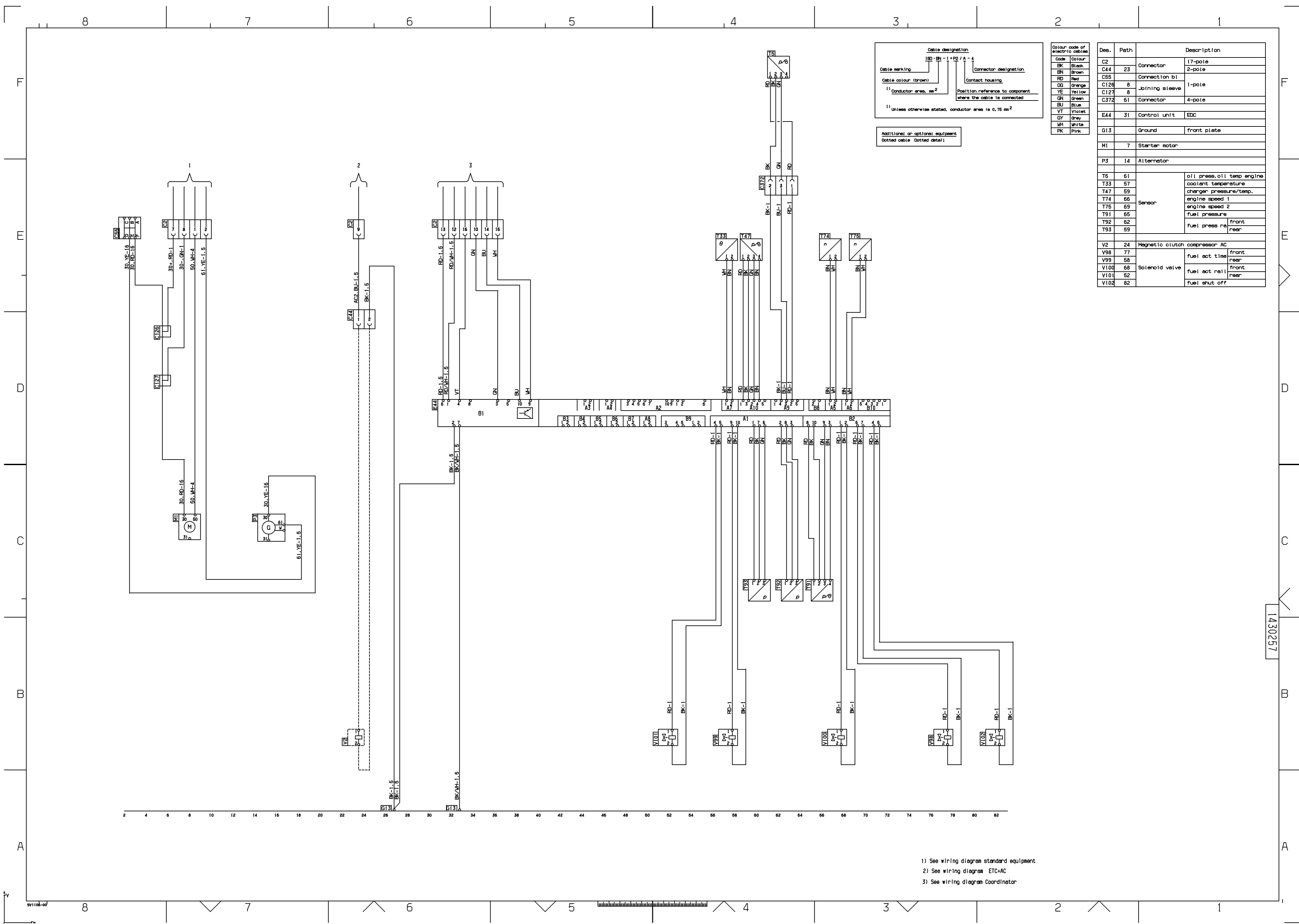


16:04-59

Edition 1

EDC S6

Kretsschema, Circuit diagram, Schaltplan, Circuitschema, Diagrama de circuitos, Schema circuito, Schéma de circuit, Piirikaavio, Schemat obwodu, Diagrama de circuito



Cable designation

Cable marking: 15D - BN - 1 + P2 / A - 4

Cable colour (brown) | Connector designation

1) Conductor area, mm² | Position reference to component where the cable is connected

1) Unless otherwise stated, conductor area is 0.75 mm²

Additional or optional equipment
Dotted cable Dotted detail

Colour code of electric cables

Code	Colour
BK	Black
BN	Brown
RD	Red
OG	Orange
YE	Yellow
GN	Green
BU	Blue
VT	Violet
GR	Grey
WH	White
PK	Pink

Des.	Path	Description
C2		Connector 17-pole
C44	23	Connector 2-pole
C55		Connection b1
C126	8	Joining sleeve 1-pole
C127	8	Joining sleeve 1-pole
C372	61	Connector 4-pole
E44	31	Control unit EDC
G13		Ground front plate
M1	7	Starter motor
P3	14	Alternator
T6	61	oil press, oil temp engine
T33	57	coolant temperature
T47	59	charger pressure/temp.
T74	66	engine speed 1
T75	69	engine speed 2
T91	65	fuel pressure
T92	62	fuel press rear
T93	59	fuel press rear
V2	24	Magnetic clutch compressor AC
V98	77	fuel act time front
V99	58	fuel act time rear
V100	68	fuel act rail front
V101	52	fuel act rail rear
V102	82	fuel shut off

1) See wiring diagram standard equipment
2) See wiring diagram ETC+AC
3) See wiring diagram Coordinator

1430257