

SCANIA

16:04-62

Edition 1

Styrd stödaxel

Steering tag axle

Gelenkte Liftachse

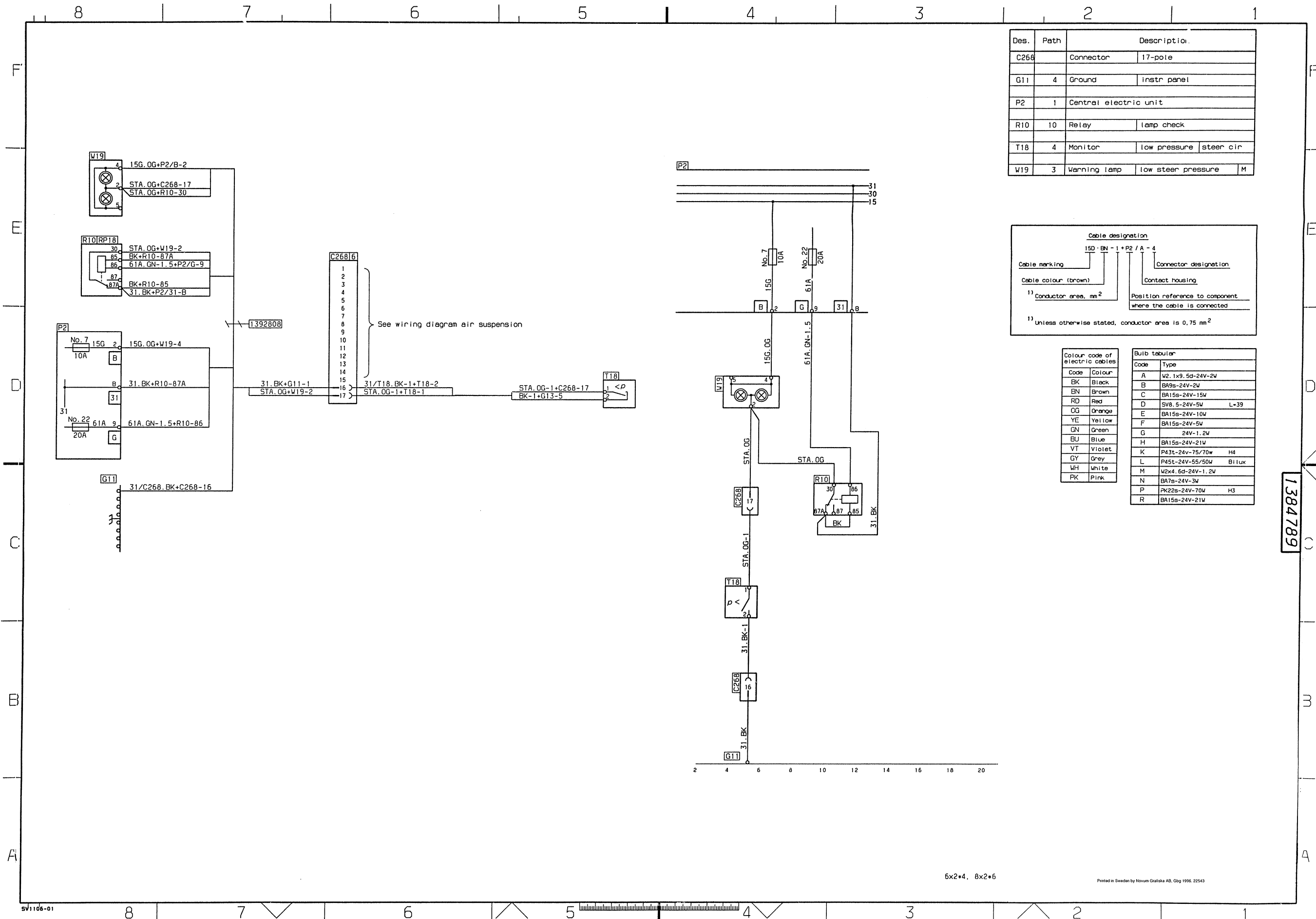
Bestuurbare voorloopas

Essieu porteur directeur

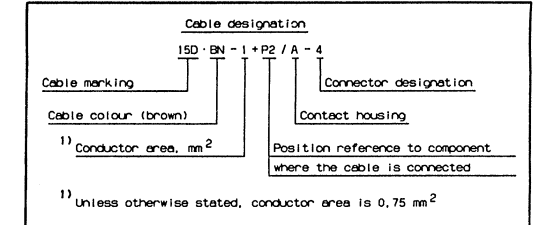
Eje portador dirigido

Assale di supporto sterzante

Ohjaava tukiakseli



Des.	Path	Description
C268		Connector 17-pole
G11	4	Ground Instr panel
P2	1	Central electric unit
R10	10	Relay lamp check
T18	4	Monitor low pressure steer cir
W19	3	Warning lamp low steer pressure M



Code	Colour
BK	Black
BN	Brown
RD	Red
OG	Orange
YE	Yellow
GN	Green
BU	Blue
VT	Violet
GY	Grey
WH	White
PK	Pink

Code	Type
A	W2, 1x9, 5d-24V-2W
B	BA9s-24V-2W
C	BA15s-24V-15W
D	SV8, 5-24V-5W L-39
E	BA15s-24V-10W
F	BA15s-24V-5W
G	24V-1,2W
H	BA15s-24V-21W
K	P43t-24V-75/70w H4
L	P45t-24V-55/50W Bilux
M	W2x4, 6d-24V-1,2W
N	BA7s-24V-3W
P	Pk22s-24V-70W H3
R	BA15s-24V-21W

1384789

5x2+4, 8x2+6

Printed in Sweden by Novum Grafiska AB, Gbg 1996, 22543