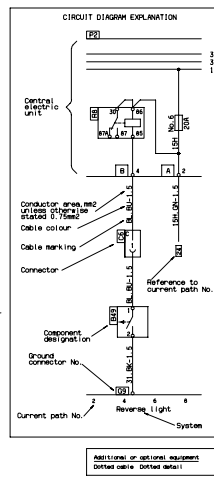
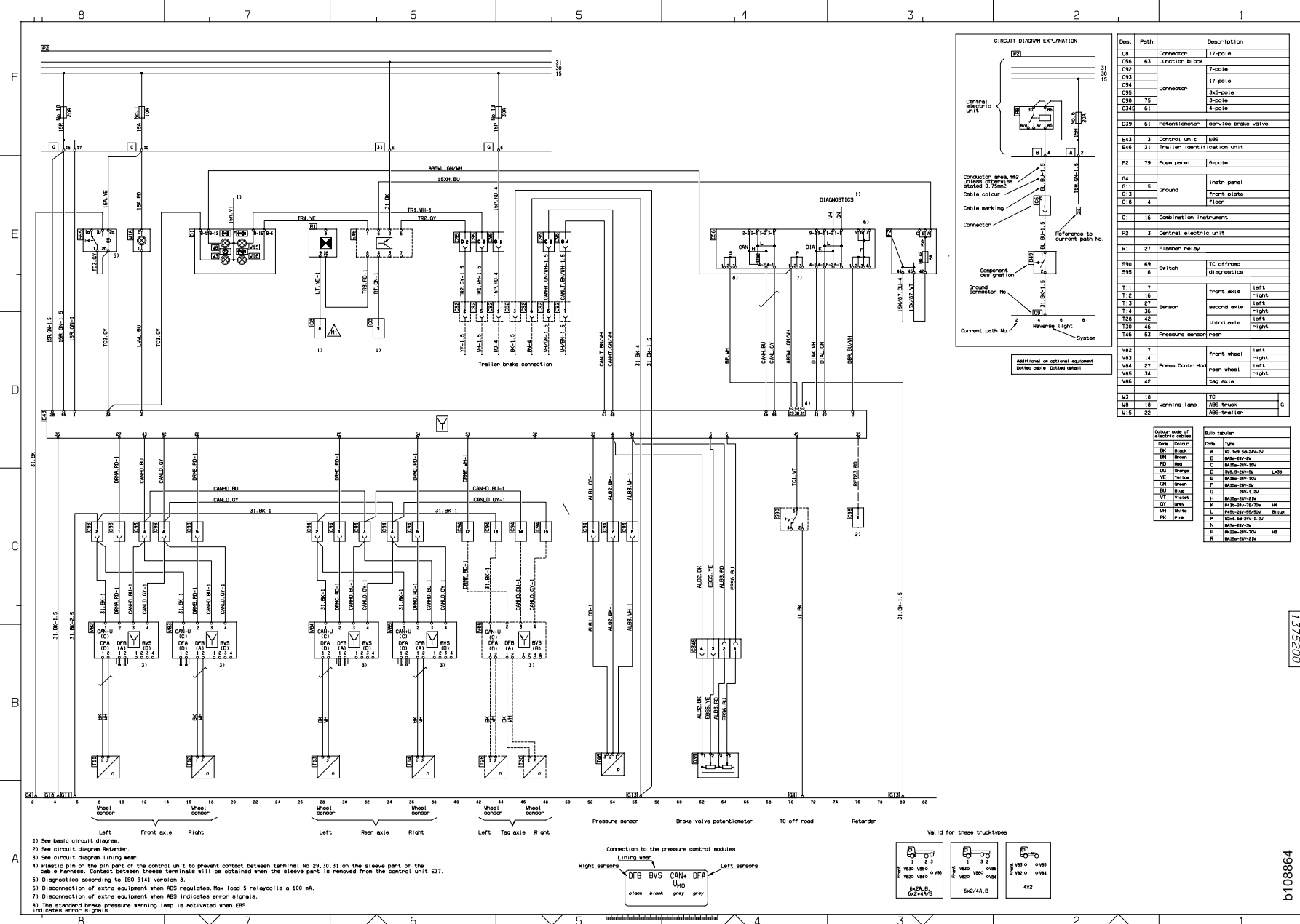


**16:05-35**

Utgåva/Issue/Ausgabe/Utgave/Edición/Édition/Edizione/Painos 1

**EBS**

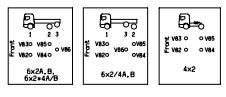
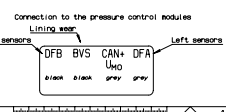
Kretsschema  
Circuit diagram  
Stromkreitsplan  
Circuitschema  
Esquema del sistema  
Schema de circuits  
Schema circuito  
Perussähköjärjestelmän



Des.	Path	Description
C8		Connector 17-pole
C96	63	Junction block 7-pole
C92		7-pole
C93		17-pole
C94		Connector 24-pole
C95		24-pole
C98	75	3-pole
C348	61	4-pole
D39	61	Potentiometer service brake valve
E43	3	Control unit EBS
E46	31	Trailer identification unit
F2	79	Fuse panel 6-pole
G4		Instr. panel
G11	5	Ground Front plate
G13	4	Floor
G18	4	Floor
O1	16	Combination instrument
P2	3	Central electric unit
R1	27	Flasher relay
S90	69	Switch TC offroad diagnostics
S95	6	Switch
T11	7	front axle left
T12	16	front axle right
T13	27	second axle left
T14	36	right
T28	42	third axle left
T30	46	third axle right
T46	53	Pressure sensor rear
V82	7	Front wheel left
V83	14	right
V84	27	Press Contr Mod rear wheel left
V85	34	right
V86	42	Tsp axle
U3	18	TC
U8	18	ABS-truck
V15	22	Warning lamp ABS-trailer

Color code of electric cables	Build type		
Code	Color	Code	Type
BR	Brown	A	MS-TSP-24V-2V
BN	Black	B	MS-TSP-2V
CD	Red	C	MS-TSP-24V-12V
CG	Orange	D	MS-TSP-24V
GE	Yellow	E	MS-TSP-24V-12V L-3V
GN	Green	F	MS-TSP-24V
GR	Blue	G	24V-12V
GY	Grey	H	MS-TSP-24V
K		K	MS-TSP-24V-2V MS
LM	White	L	MS-TSP-24V-24V Blue
PK	Pink	M	MS-TSP-24V-2V
		N	MS-TSP-24V
		R	MS-TSP-24V MS

- 1) See basic circuit diagram.
- 2) See circuit diagram Retarder.
- 3) See circuit diagram wiring map.
- 4) First to pin on the sleeve part of the control unit to prevent contact between terminal No 29, 30, 31 on the sleeve part of the cable harness. Contact between these terminals will be obtained when the sleeve part is removed from the control unit E37.
- 5) Diagnostics according to 150 914 version 8.
- 6) Disconnection of extra equipment when ABS regulates. Max load 5 relaycoils a 100 mA.
- 7) Disconnection of extra equipment when ABS indicates error signals.
- 8) The standard brake pressure warning lamp is activated when EBS indicates error in control.



1575200  
b108864