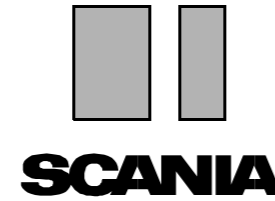


Des.	Sheet	Pos.	Description
B1	1	A5	
B11	3	E5	Switch
B16	3	D4	stop light diff lock 1st axle reverse light
C7	3	F1	
C22	1	C4	2-pole
C23	1	C5	9-pole
C48	1	A5	3-pole
C57	1	D2	4-pole
C114	3	E4	
C155	3	D5	Connector
C164	3	F3	2-pole
C500	2	B7	
C504	2	D2	17-pole
C520	2	E2	9-pole
C521	2	D2	
C524	1	E5	Connection block
C614	1	B5	9-pole
C722	3	C1.F4	
C723	3	C1.F4	
C724	3	C3.F5	
C725	3	C2.F5	
C726	3	C2.F3	1-pole
C727	3	C2.F3	
C728	3	C3.F4	
C729	3	C3.F4	Connector
C730	3	D2	3-pole
C731	3	D1	
C732	3	D1	1-pole
C733	3	D3	
C746	3	E6	4-pole
C747	3	E6	1-pole
C748	3	F6	4-pole
C749	3	F6	1-pole
F514	2	B4	Fuse
F521	2	B3	
G501	2	F2	electrical center
G544	1	C3	
G545	1	A4.C2	
G546	2	C1	
G547	3	E3	
G548	3	D3	Ground
G549	3	B5	
G550	3	A5	
G551	2	B5	
G552	3	A5	
G553	3	A4	
G554	3	F6	
G555	3	D5	
H4	3	F1	Air dryer
L18	1	D6	Symbol lighting
L22	1	D6	rheostat switch lighting
M1	3	B6	Starter motor
N2	3	F2	Signal horn
O4	1	F2	Tachograph
O500	1	F5	Combination instrument
P1	2	B5	Battery
P2	2	F8	Central electric unit
P3	3	B6	Alternator
P800	3	B6	Extra alternator
R1	1	D8	Flasher relay
R4	2	F7	Relay
R5/RR	1	E8	full-and dipped beam
R8	2	F5	stop light
R19	2	F6	supply alternator charging
R20	2	F8	supply key position 2
R21	2	F6	Relay
R22	2	F6	supply parking light
R24	2	F5	intermittent wiper reverse light
R502	2	F4	horn
R5127	1	E8	
S1	1	E6	lighting
S2	1	C2	hazard warning light
S4	1	C2	Switch
S12	1	D6	starter
S17	1	C5	differential rear axle M
S19	1	F5	exhaust brake on/off instrument lighting
S24	1	C3	windscreen wiper, washer
S25	1	C5	Switch
S26	1	B5	dir ind l, full/dip beam signal horn
T1	1	A4	Sensor/Monitor
T2	1	A4	low brake pres front air rear air
T3	1	B4	Monitor
T4	1	B4	applied parking brake low pressure park trail
T9	3	C6	Sensor/Monitor
T10	3	C5	oil pressure engine
T20	3	D4	Sensor
T503	3	C5	coolant temperature engine tachograph coolant level
V10	3	F2	Solenoid valve
V17	3	F3	diff lock con axle exhaust brake
V45	3	D6	Fuel shut off

115104

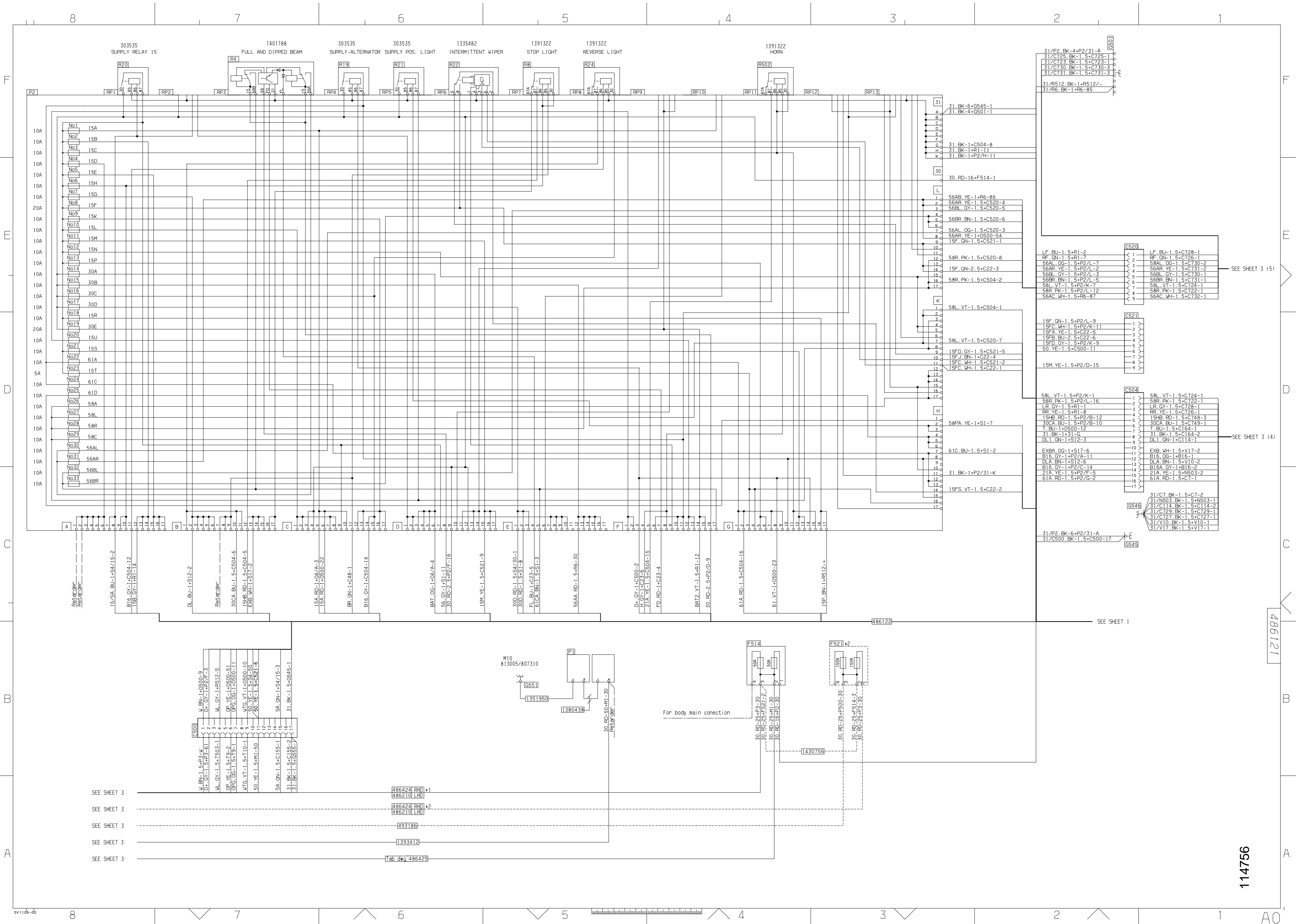


16:52-21

Utgåva/Issue/Ausgabe/Uitgave/Edición/Edizione/Edizione/Painos 1

- Elcentral
- Electrical center
- Elektrozentrale
- Elektisch centrum
- Centralilla eléctrica
- Centrale eléctrica
- Centralina alettrica
- Sähkökeskus

F94



- SEE SHEET 3
- SEE SHEET 3
- SEE SHEET 3
- SEE SHEET 3
- SEE SHEET 3

1	V.BN-1.5+P2-3
2	D-1.5+P2-3
3	M-1.5+P2-3
4	M-1.5+P2-3
5	OP-1.5+P2-3
6	OP-1.5+P2-3
7	OP-1.5+P2-3
8	OP-1.5+P2-3
9	OP-1.5+P2-3
10	OP-1.5+P2-3
11	OP-1.5+P2-3
12	OP-1.5+P2-3
13	OP-1.5+P2-3
14	OP-1.5+P2-3
15	OP-1.5+P2-3
16	OP-1.5+P2-3
17	OP-1.5+P2-3

486424 RH) *1
486210 LH)
486424 RH) *2
486210 LH)
493186
1393412
Tab DWG 486429

SEE SHEET 1

114756

486121

A0