



16:52-55

Utgåva/Issue/Ausgabe/Uitgave/Edición/Édition/Edizione/Painos 1

Nod F

Node F

Knoten F

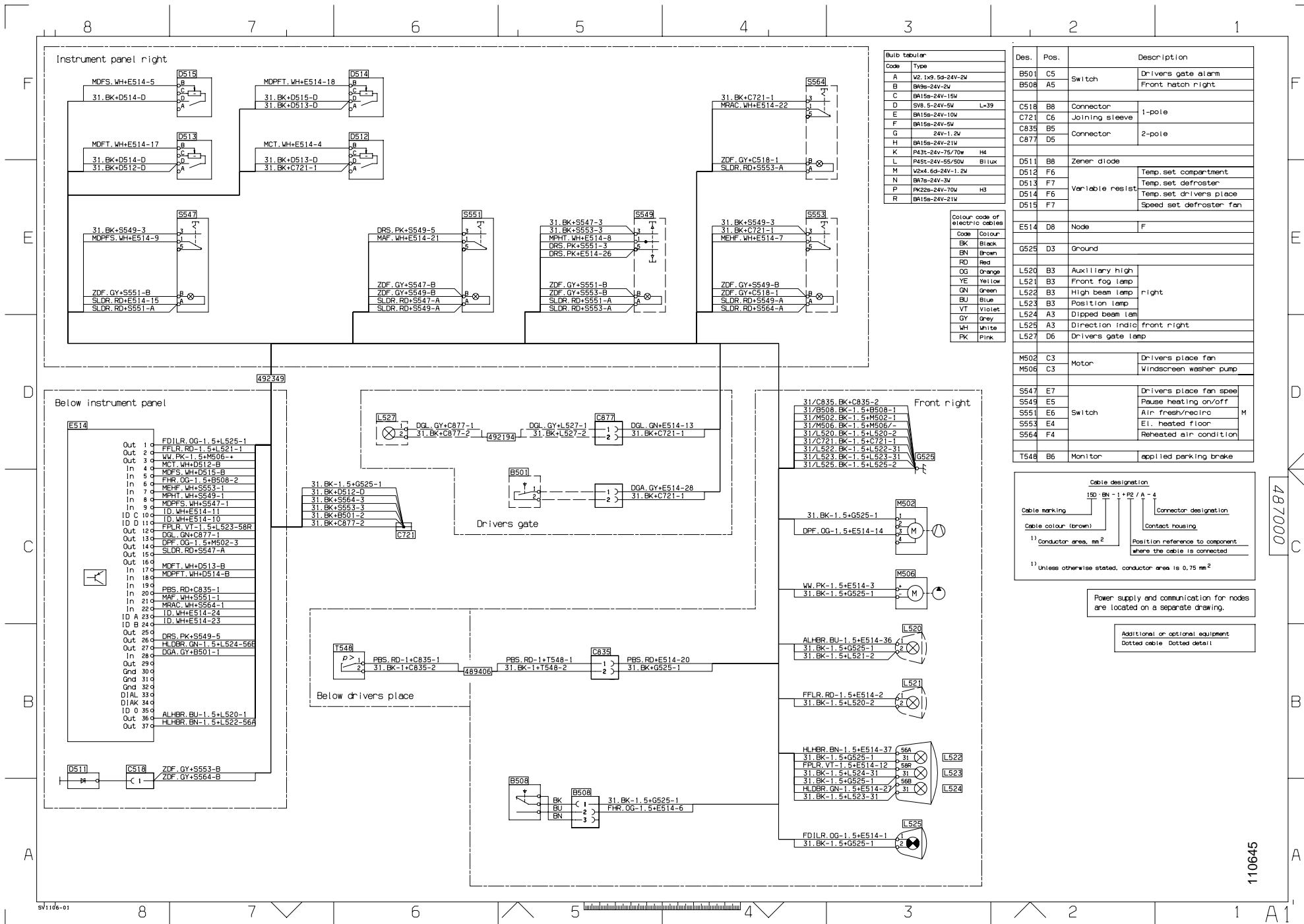
Vertakkingspunt F

Nodo F

Nod F

Nod F

Noodi F



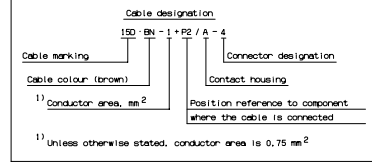
Bulb tabular

Code	Type
A	W2, 1x6 5p-24V-2W
B	BW6-24V-2V
C	BA15s-24V-15W
D	SV8, 5-24V-5W L=39
E	BA15s-24V-10W
F	BA15s-24V-5W
G	24V-1,2W
H	BA15s-24V-21W
K	P43t-24V-75/70W H4
L	PA5t-24V-55/50W B1Lux
M	W24t-6p-24V-1,2W
N	BA7s-24V-3W
P	PK22s-24V-70W H3
R	BA15s-24V-21W

Colour code of electric cables

Code	Colour
BK	Black
BN	Brown
RD	Red
OG	Orange
YE	Yellow
GN	Green
BU	Blue
VT	Violet
WH	White
PK	Pink

Des.	Pos.	Description
B501	C5	Drivers gate alarm
B508	A5	Switch Front hatch right
C518	B8	Connector
C721	C6	Joining sleeve
C835	B5	Variable resist
C877	D5	Connector
D511	B8	Zener diode
D512	F6	Temp.set compartment
D513	F7	Temp.set defroster
D514	F6	Temp.set drivers place
D515	F7	Speed set defroster fan
E514	D8	Node
G525	D3	Ground
L520	B3	Auxiliary high
L521	B3	Front fog lamp
L522	B3	High beam lamp
L523	B3	Position lamp
L524	A3	Dipped beam lam
L525	A3	Direction indic front right
L527	D6	Drivers gate lamp
M502	C3	Motor
M506	C3	Motor
S547	E7	Drivers place fan speed
S549	E5	Push heating on/off
S551	E6	Switch
S553	E4	Air fresh/recirc
S564	F4	Reheated air condition
T548	B6	Monitor



Power supply and communication for nodes are located on a separate drawing.

Additional or optional equipment
Dotted cable Dotted detail

487000

110645