

## General

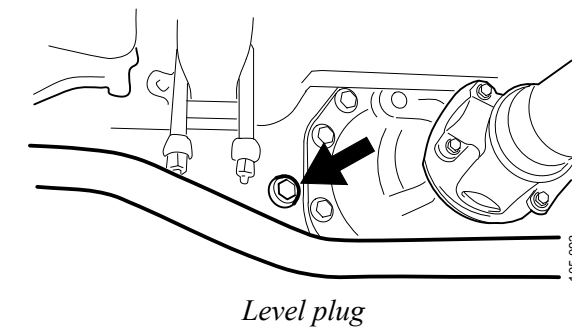
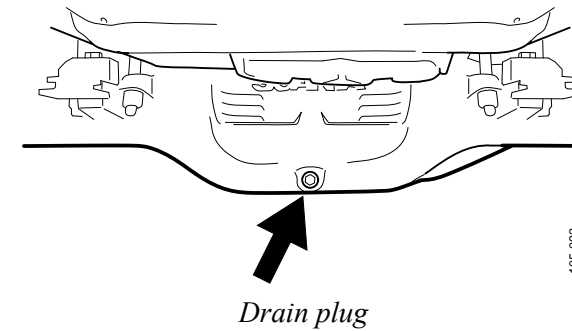


**WARNING!**

Beware of hot oil after driving. Wear protective gloves and goggles.

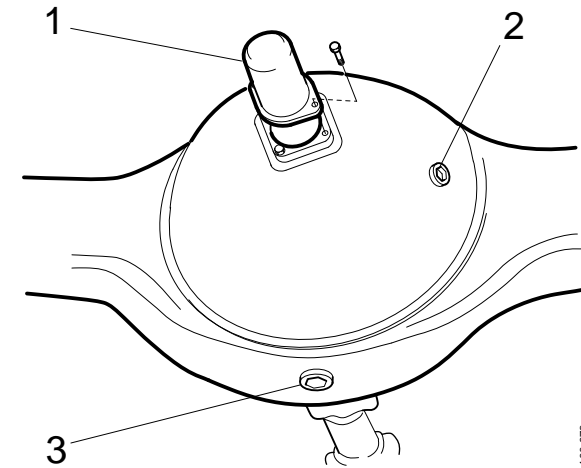
## Front axle gear

1. Remove the drain plug and level plug. Let the oil run out.



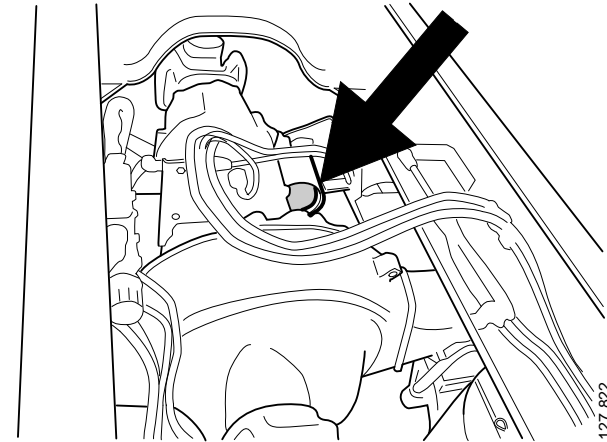
## Rear axle gear

1. Remove the drain plug and level plug. Let the oil run out.
2. Remove the oil filter



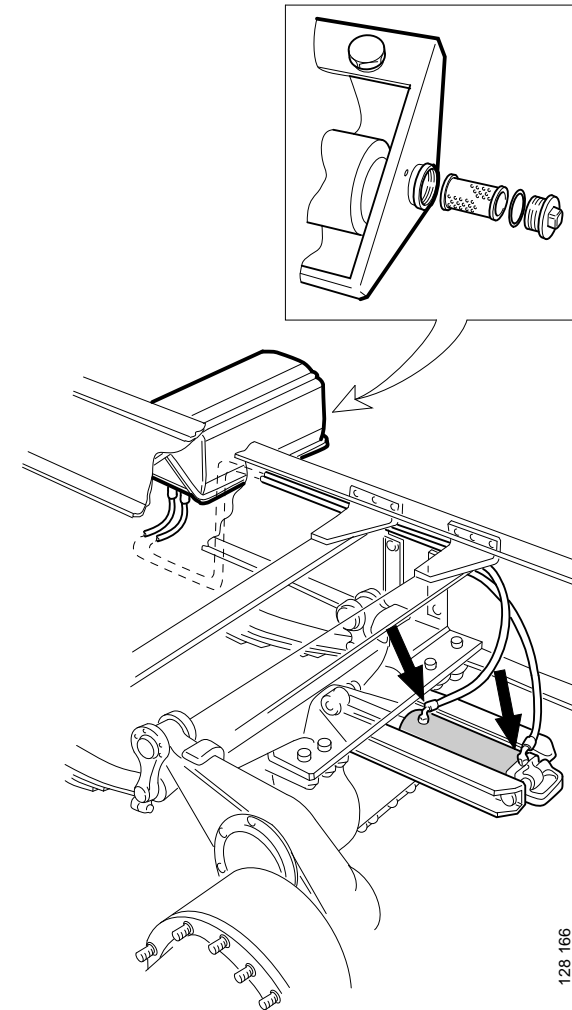
1. *Oil filter with protective casing*
2. *Level plug*
3. *Drain plug*

3. Also remove the oil filter from the forward rear axle if the vehicle has two driven rear axles.



## Tag axle lift

1. Remove the filter plug. Drain the oil from the reservoir.
2. Detach the hose connections. Drain the oil from the cylinder.



128 166

## Rear steered tag axles



### WARNING!

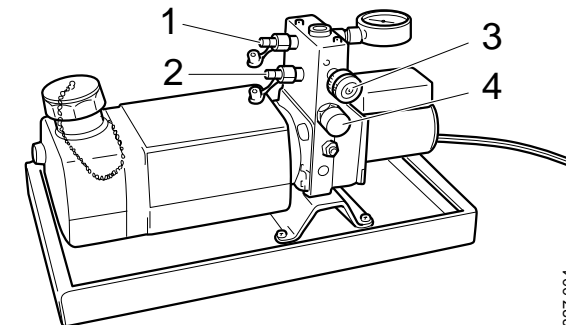
Before starting work on the hydraulic system, the pressure must first be relieved in a controlled manner. The system has an overpressure of 14 bar, which means that the oil will be forced out if a union is opened without relieving the system. This means there is a risk of eye injury. Wear protective goggles.

The accumulator tank is filled with nitrogen at an overpressure of approx. 8.5 bar. This means that the accumulator tank is pressurised even if there is no oil in the system.

Hydraulic oil is aggressive; avoid skin contact at all times. Wear protective gloves.

Relieving the pressure:

1. Close the return valve. Unscrew the pressure limiting valve.

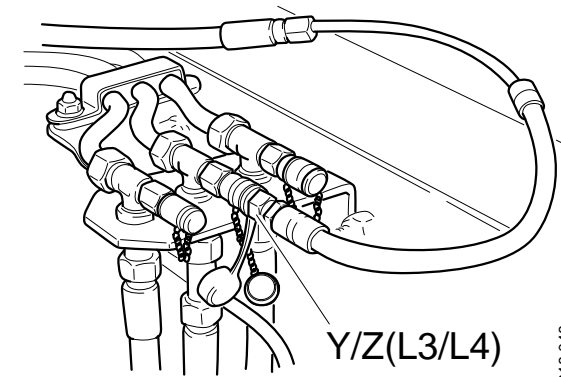


327 004

*Filling equipment*

1. *Pressure connection*
2. *Return connection*
3. *Pressure limiting valve*
4. *Return valve*

2. Connect the return hose from the filling equipment return connection to the union marked Y/Z or L3/L4 on the accumulator as illustrated.
3. Open the return valve on the filling equipment. The oil will now be returned to the filling equipment tank.
4. Oil can be drained from the pipe using compressed air. The connections on the master cylinder and centering cylinder must then be undone.



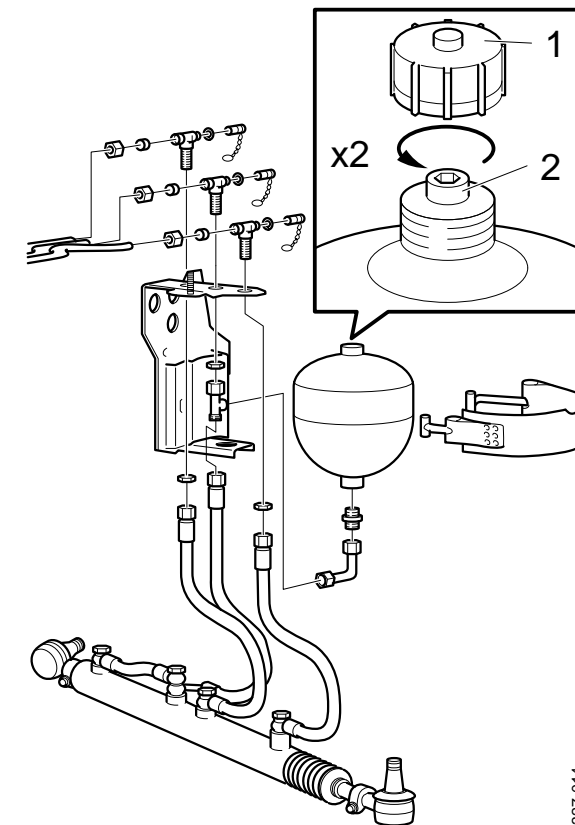
318 048

1. *Y/Z - New marking*
2. *(L3/L4) - Previous marking*

5. Remove the protective cap on the gas side of the accumulator tank.
3. Undo the plug on the gas side max 2 turns and allow the gas to seep out.
4. Remove the plug completely.

**! IMPORTANT!**

Handle empty accumulator tanks in compliance with local regulations.



1. *Protective cap*
2. *Plug*

327 014