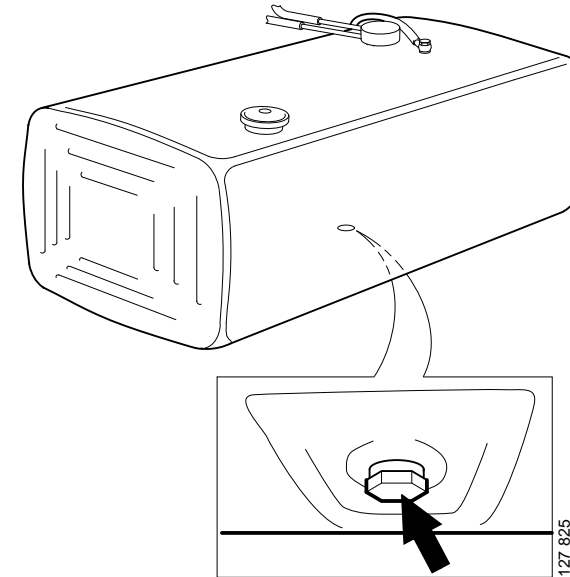


Work description

Diesel

1. Check the amount of fuel in the fuel tanks. Make sure that the container can take all the fuel.
2. Drain the tank by unscrewing the drain plug.



Ethanol



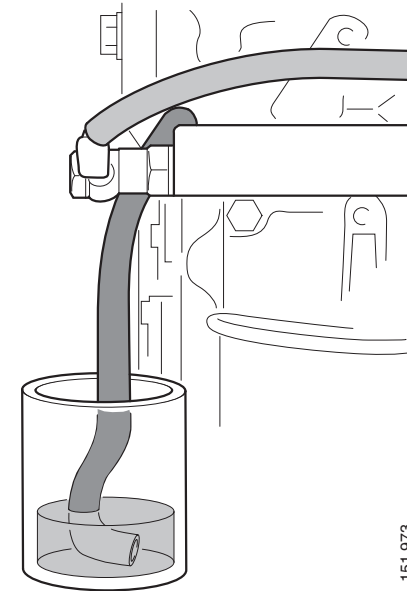
WARNING!

Ethanol fuel is extremely flammable and must be handled with great care. Both ethanol and petrol are classified as flammability class 1.

Note:

Before the vehicle is taken into the workshop, check whether the fuel system is leaking ethanol. The recommended method is to leak test the fuel system using measuring instrument 588 875. Check that the measuring instrument is calibrated as described in the instrument documentation before it is used.

1. Check the amount of fuel in the fuel tanks. Make sure that the container can take all the fuel.
2. Connect the fuel tank to be drained with the pump and the container via a ground connection.
3. Pump out as much of the ethanol as possible through the filler pipe. Make sure that the pump hose reaches the bottom of the container to prevent any static electricity. Repeat for all fuel tanks that have filler pipes.
4. Check that there is no ethanol vapour around the vehicle by searching for leaks using measuring instrument 588 875.
5. Jack up the vehicle.
6. Check the location of the drain plug for each fuel tank.



7. Repeat the following for all tanks:
 - Connect a ground connection between the fuel tank and the container.
 - Hang a funnel under the drain plug. Ensure that the funnel is sufficiently large for the fuel to run down when the drain plug is detached. Try to have as short a free fall as possible because a free fall causes static electricity. If possible, connect a hose to the funnel that reaches the bottom of the container.
 - Detach the drain plug.
 - Drain the remaining fuel.
8. Check that there is no ethanol vapour by searching for leaks using measuring instrument 588 875.