

Tools

Examples of suitable tools from Scania:

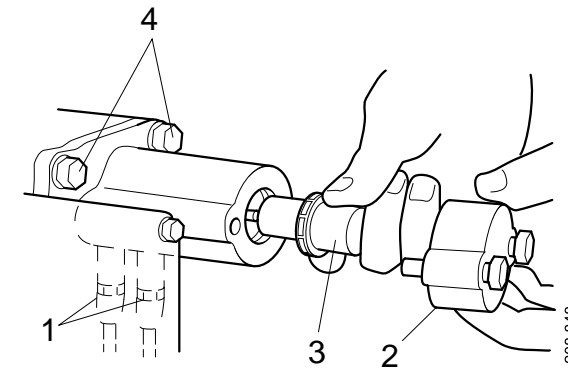
Part number	Designation
99 520	Sleeve for motor shaft

Work description

Lateral stroke cylinder

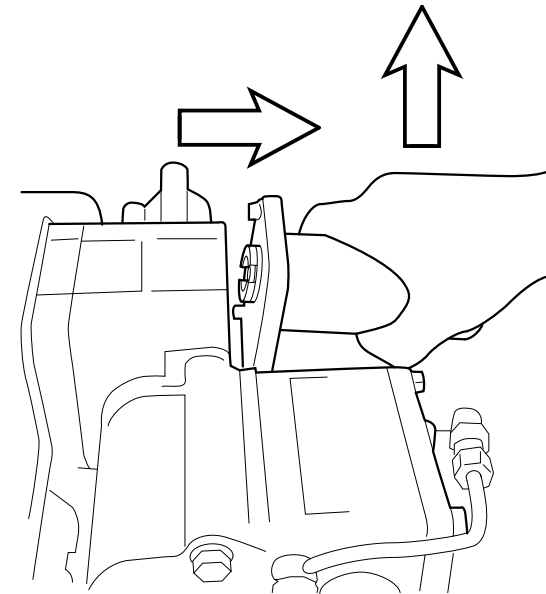
The vehicle compressed air system need not have pressure to remove the lateral stroke cylinder.

1. Switch on the power supply. Put the drive mode selector in neutral. Switch off the power.
2. Remove the air hoses.
3. Undo the screws and remove the lateral stroke cylinder cover.
4. Remove the position sensor.
5. Undo the screws.



1. Air hoses
2. Lateral stroke cylinder cover
3. Position sensor
4. Retaining screws

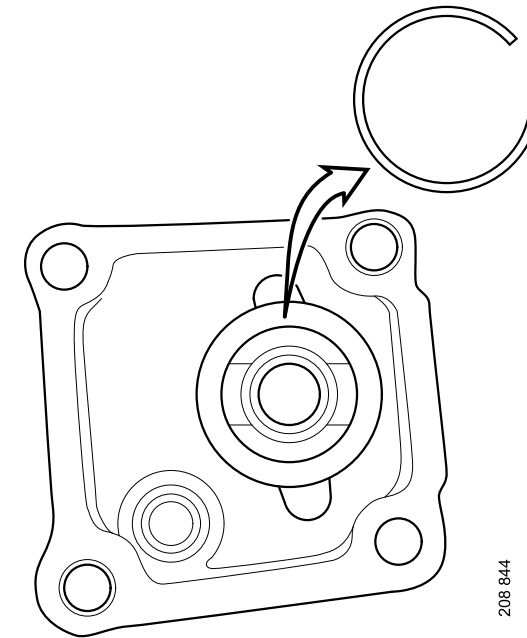
6. Remove the cylinder by pulling it first out and then up.



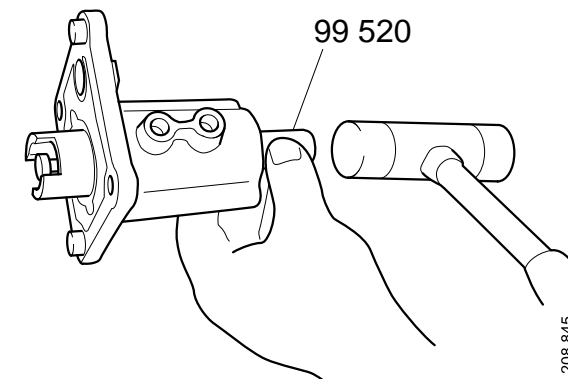
209 135

Removing the lateral stroke cylinder piston

1. Remove the piston retaining ring by carefully prising it out with a screwdriver.



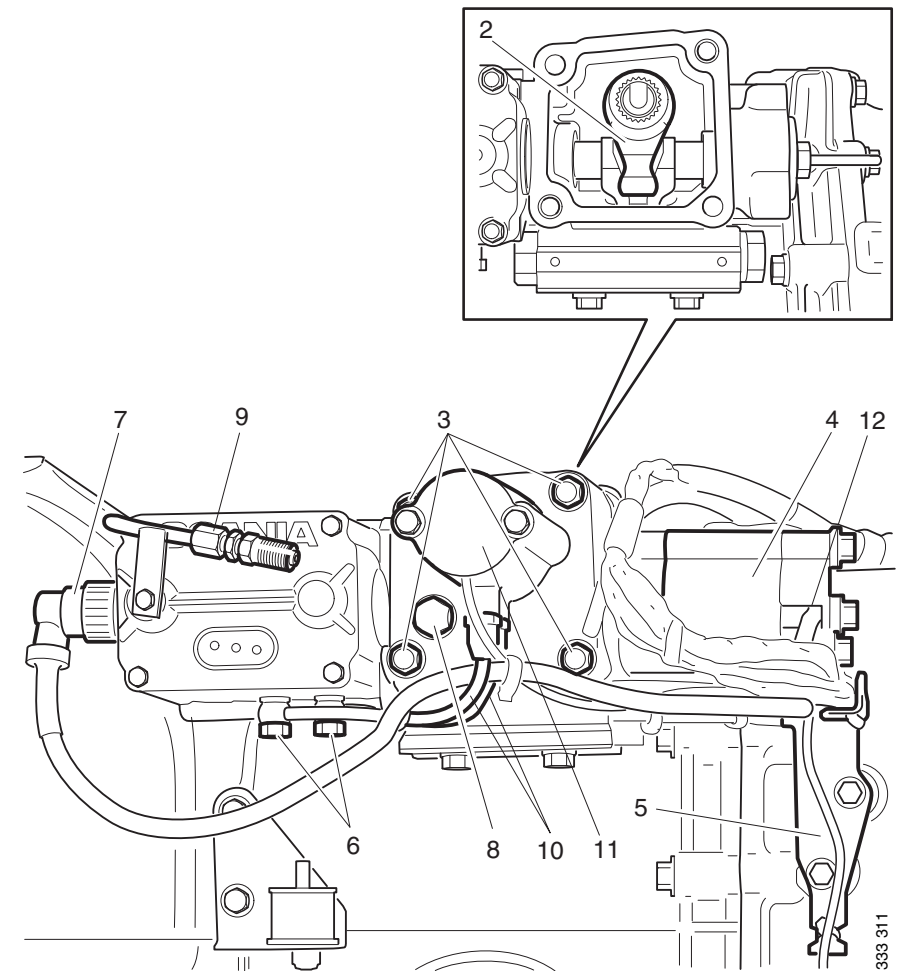
2. Use tool 99 520 to tap the piston out of the lateral stroke cylinder.



Longitudinal stroke cylinder

The vehicle compressed air system must have pressure for the gearbox to be positioned correctly before the longitudinal stroke cylinder is removed.

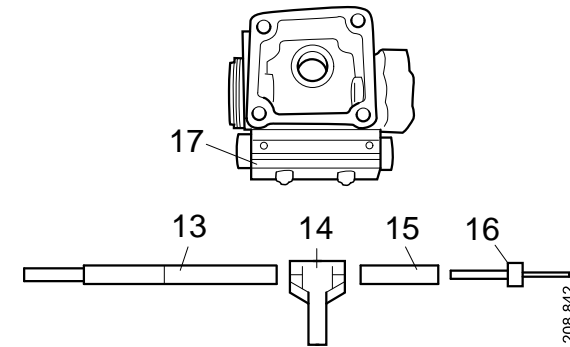
1. Switch on the power supply. Put the drive mode selector in neutral. This puts the longitudinal stroke cylinder in neutral. Switch off the power.
2. Remove the air supply hose from the solenoid valve housing.
3. Disconnect the electrical connection to the solenoid valve housing.
4. Remove the air hoses and position sensor from the lateral stroke cylinder.
5. Undo the screws and remove the lateral stroke cylinder and lever.
6. Remove the position sensor from the longitudinal stroke cylinder.
7. Remove the longitudinal stroke cylinder, gearshift housing and sensor housing.



- | | | |
|---------------------|--------------------------|----------------------|
| 2. Lever | 6. Air connections | 10. Air hoses |
| 3. Retaining screws | 7. Electrical connection | 11. Position sensor |
| 4. Sensor housing | 8. Oil filler | 12. Electrical cable |
| 5. Bracket | 9. Air supply | |

The longitudinal stroke damper pushrod and lever

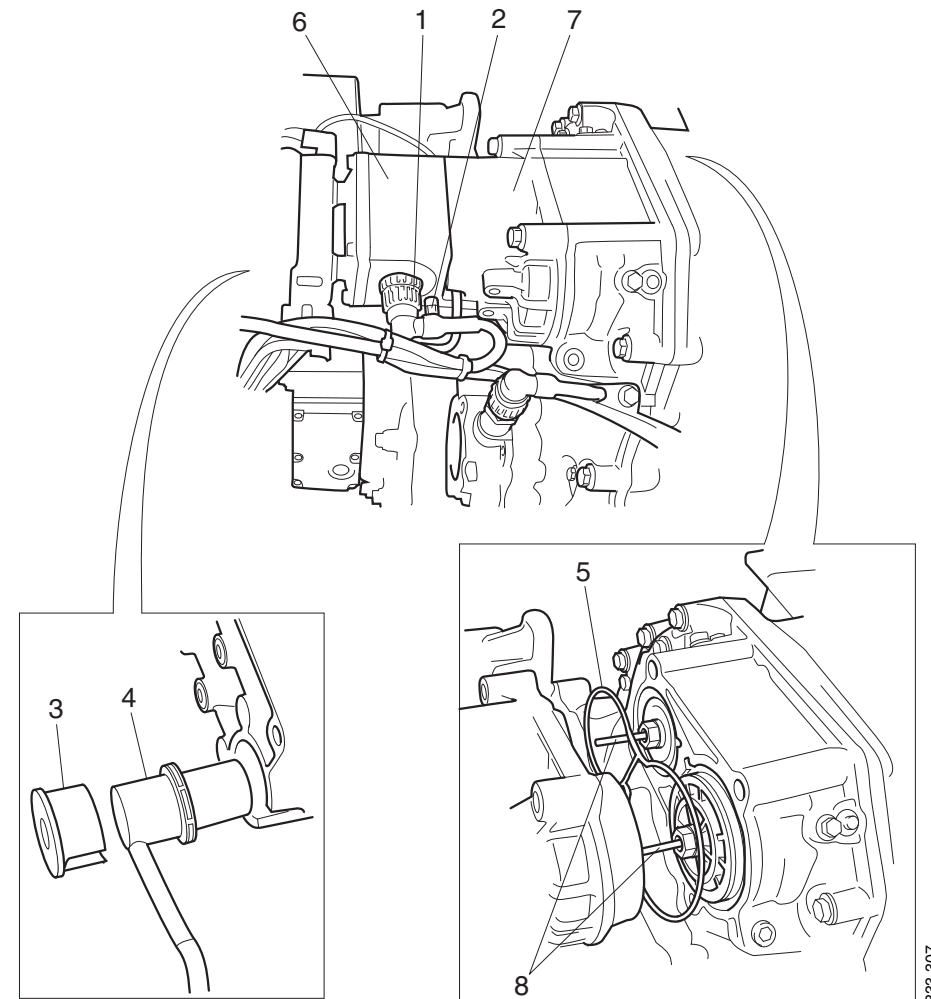
1. Undo the flange screw of the sensor unit.
2. Pull off the sleeve and lever from the pushrod and remove them from the gear-shift housing.



- 13. Pushrod*
- 14. Lever*
- 15. Sleeve*
- 16. Sensor pin*
- 17. Longitudinal stroke damper*

Range and splitter cylinders

1. Remove the electrical connection and compressed air line.
2. Undo the screws from the solenoid valve housing.
3. Remove the solenoid valve housing.
4. Remove the spacers and detach the sensors. GR type gearboxes have a plug instead of a position sensor in the split position.
5. Undo the screws for the cylinder.
6. Remove the cylinder.



333 307