

General

Applies to Knorr.

IMPORTANT!

Release the parking brake. Use chocks to prevent the vehicle from rolling.

Tools

Examples of suitable tools from Scania:

| Part number | Designation |
|-------------|---------------------------|
| 98 402 | Holder for fixture shafts |
| 98 405 | Bracket for fixture beam |
| 99 344 | Lifting tool |
| 99 395 | Drift |

Work description

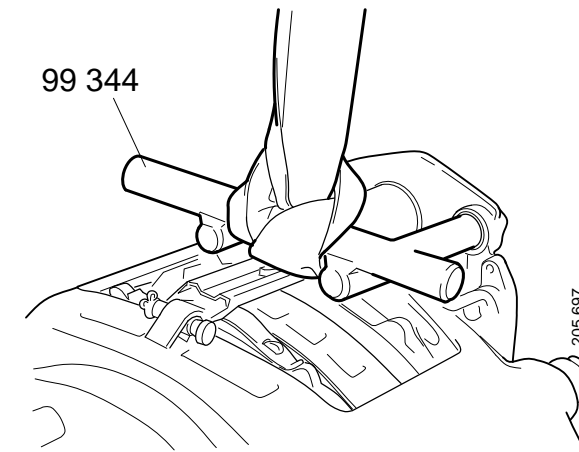
Tilt the cab and remove the mudguards before removing the brake caliper on the front axle.

1. Disconnect the wear wire and potentiometer connectors.

IMPORTANT!

Be careful with the screws in the potentiometer aluminium housing. They might have oxidised and will snap off easily.

2. Remove the brake chamber from the caliper.
3. Remove the protection over the brake adjuster and adjust the brake pads out using the adjusting screw.
4. Remove the brake pads.



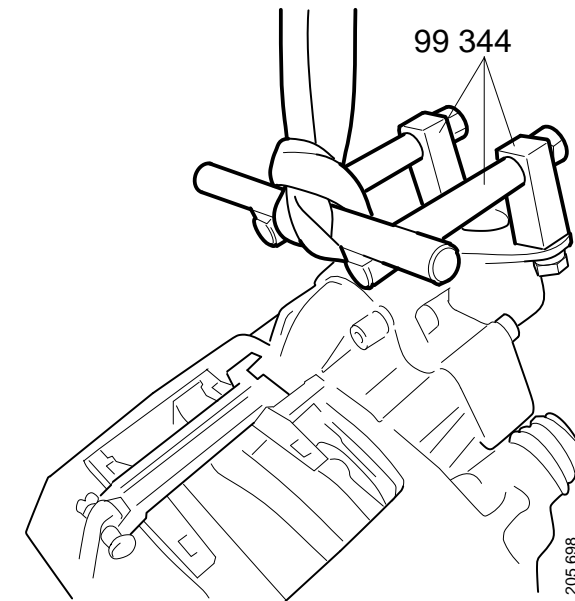
Horizontal brake chamber

5. Secure lifting tool 99 344 to the brake caliper.

! IMPORTANT!

- Attach the lifting tool to an overhead hoist using a strap or alternatively in the gearbox jack, before the brake caliper is removed. It will otherwise fall off.
- Do not lift using the brake pad latch clamp. It is not strong enough for that.

On the front brake calipers, the lifting tool is screwed into the brake chamber screw holes on the brake caliper.



Vertical brake chamber

On the rear brake calipers, the lifting tool is mounted in the gearbox jack using 98 402 and 98 405.

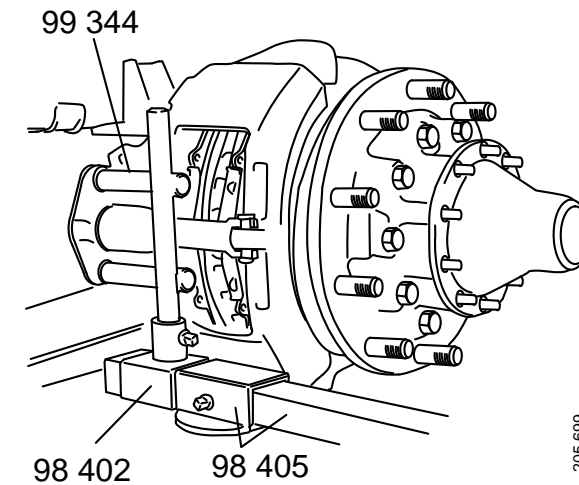
6. Select one of the following alternatives:

Disc brake caliper with brake pad carrier:

- Remove the screws securing the brake pad carrier.
- Remove the brake caliper with brake pad carrier.

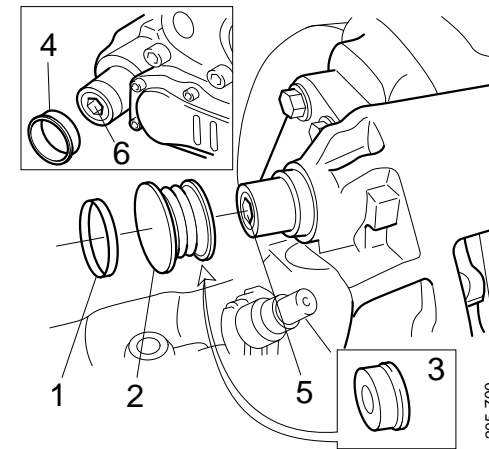
Brake caliper without brake pad carrier:

- Remove the clamp and the protective cap or cover.
- If there is a cover, prise it off with a screwdriver.



205 699

- Remove the screws (5 and 6) that hold the slide pins.
- Remove the brake caliper from the brake pad carrier.



- 1. Clamp*
- 2. Protective cap*
- 3. Cover*
- 4. Protection*
- 5. Screw*
- 6. Screw*