

General

Applies to 9, 13 and 16 litre engines with XPI and cylinder block generation 2.



WARNING!

- The fuel system has a very high fuel pressure of up to 3,000 bar.
- The fuel system must be depressurised using SDP3 before any work is started.
- The system should always be treated as pressurised, even when the engine is switched off.
- Wear protective gloves and goggles.

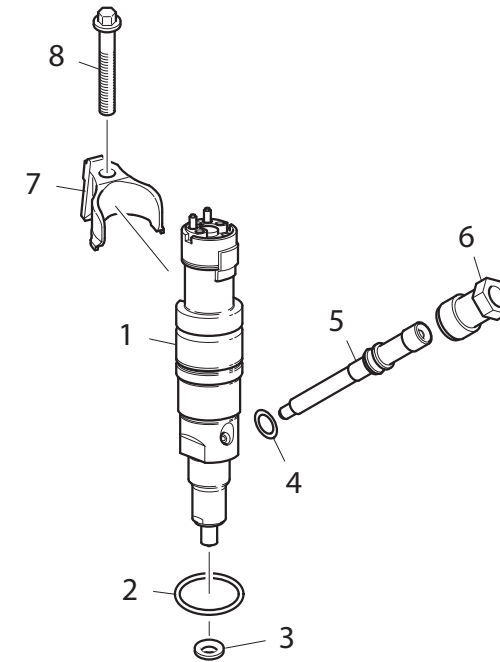
Tools

Examples of suitable tools from Scania:

Part number	Designation
99 475	Crow bar for removing injectors

Work description

1. Start by depressurising the fuel system.
2. Place a rag over the high pressure pipe nut at the accumulator for the cylinder where the injector has to be removed. Then carefully undo the nut.
3. Remove the upper rocker cover.
4. Undo the nuts for the electric connections to the injector.
5. Remove the high pressure pipe. Undo the cap nut at the connection to the injector.



326 650

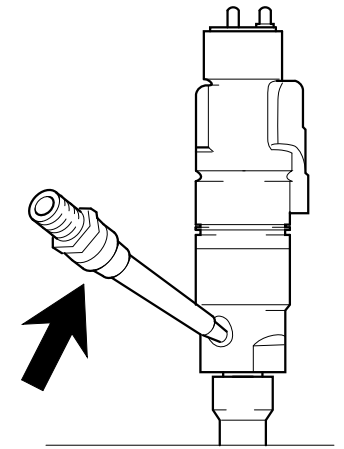
1. *Injector*
2. *O-ring*
3. *Sealing washer*
4. *O-ring*
5. *Connection*
6. *Cap nut*
7. *Holder*
8. *Screw*

6. Undo the cap nut for the connection and pull the connection upwards.

Note:

To gain access to the connection for cylinder 5, the high pressure pipe for cylinder 6 must first be removed. If it is difficult to pull the connection upwards, you can replace the cap nut with nut part number 812 889. Lever carefully with a crow bar.

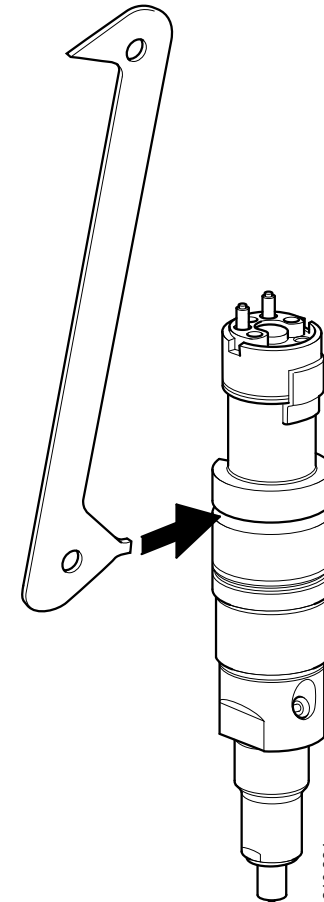
7. Undo the injector holder screw.



207 712

The connection must be removed before the injector can be removed.

8. Undo the injector using the special tool, by prising in the groove on the injector sleeve. Check to ensure that the sealing washer follows along up and does not remain in the cylinder head.



210 864