

## Tools

Examples of suitable tools from Scania:

Part number	Designation
99 242	Lifting tool
99 431	Cab strut

## Work description

1. Open the upper front grille panel and take out the handle bar which is used to tilt the cab.
2. Fully tilt the cab, see Instructions, tilting the cab.
3. Fit the cab strut.
4. Separate the gearshift rod at the centre joint and move it aside.
5. Remove the cab strut and tilt the cab back into position.

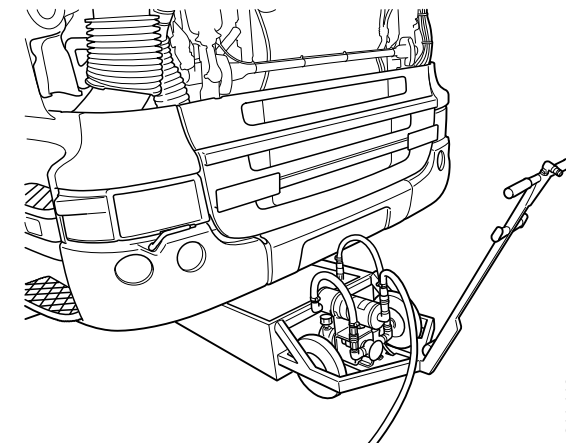
### Note:

Check that the gearshift rod is not broken or damages anything when the cab is lowered.

- 
6. Remove the battery connection.
  7. Evacuate the pneumatic system.
  8. Drain the cooling system. Refer to the instructions for draining the cooling system.
  9. Drain the air conditioning.<sup>1</sup>

---

1. Option

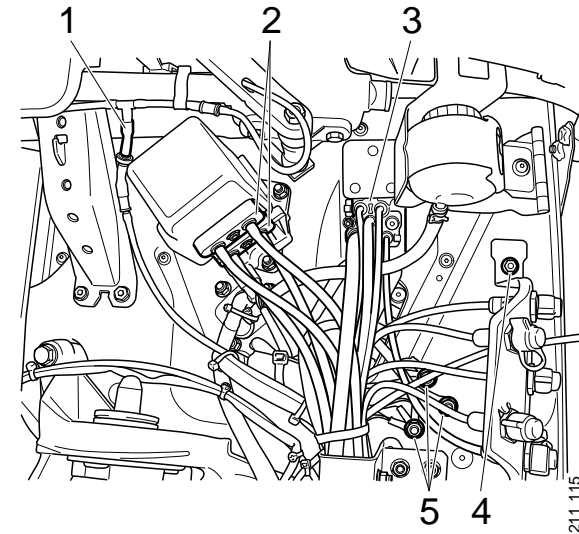


*Draining the cooling system*

211 113

Remove parts in the following order:

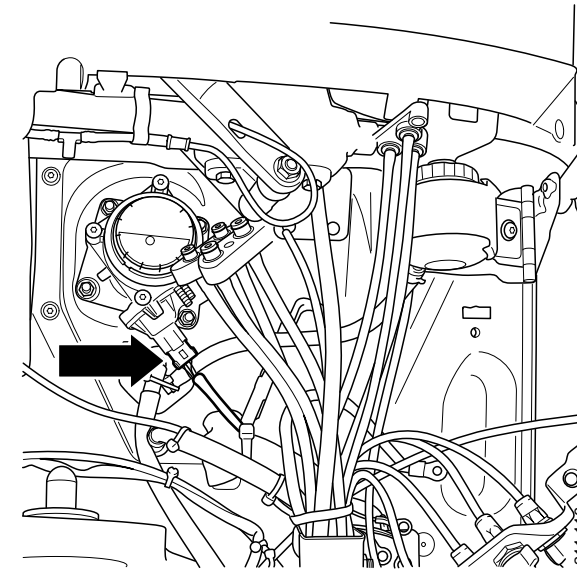
1. Windscreen washer hose
2. Compressed air connections (brake)
3. Compressed air connections (brake)
4. Test connection bracket
5. Ground connections



1. *Hose*
2. *Compressed air connection*
3. *Compressed air connection*
4. *Bracket*
5. *Ground connection*

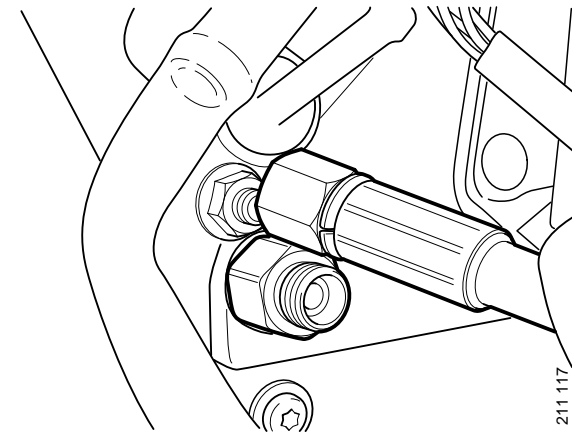
Then continue to remove parts in the following order:

1. Electrical connection to the brake system.

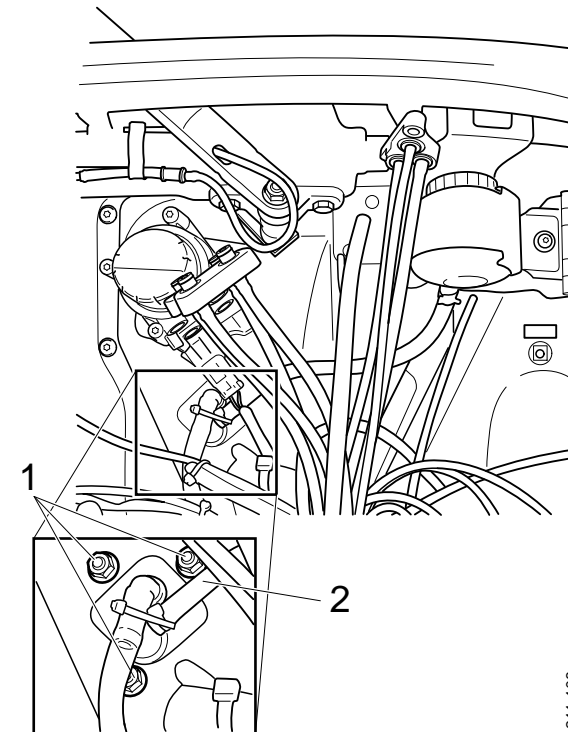


*Electrical connection*

2. Operating hose for servomaster.



3. Hose for clutch fluid from servomaster. Collect clutch fluid in a suitable container.

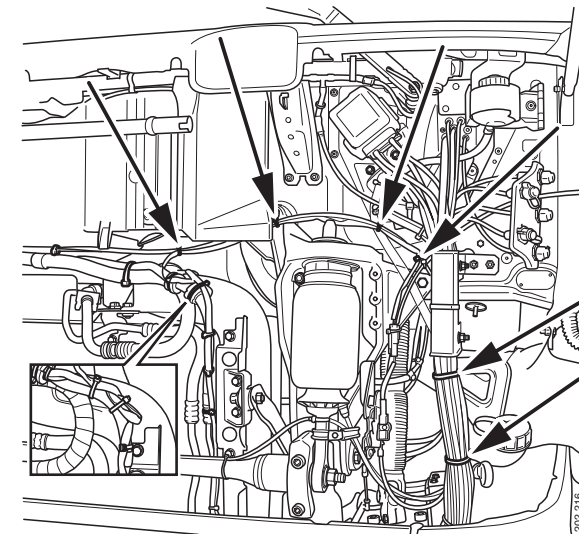


211 108

1. Nuts
2. Clutch fluid hose

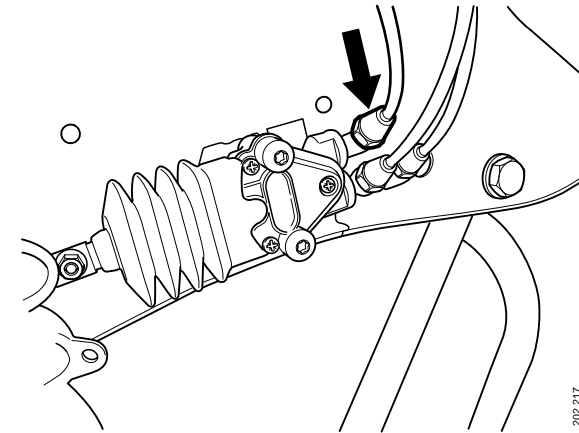
#### 4. Cable ties securing:

- The wires to the front grille panel lock
- The electrical cable for the alarm
- The hoses between the air bellows and the levelling valve

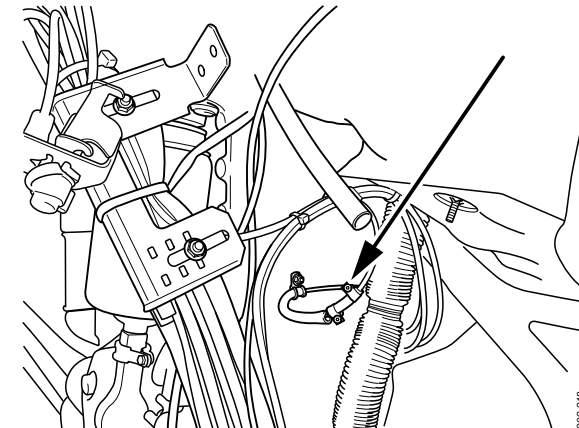


*Cable tie*

5. Feed hose to the front air bellows at the levelling valve.
6. The link to the levelling valve link arm.



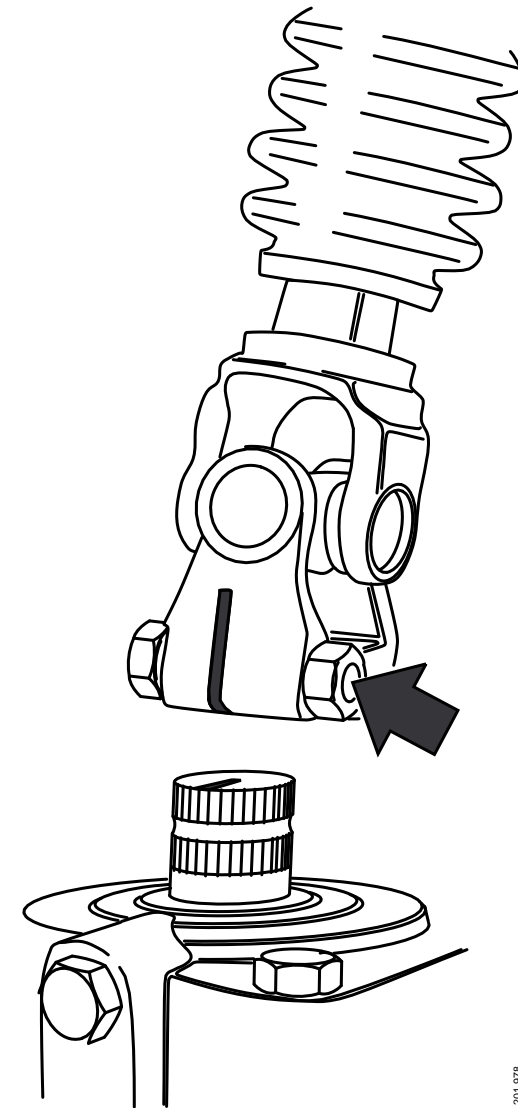
7. The fuel supply hose to the auxiliary heater.<sup>1</sup> Cut all the cable ties at the same time.



---

1. Option

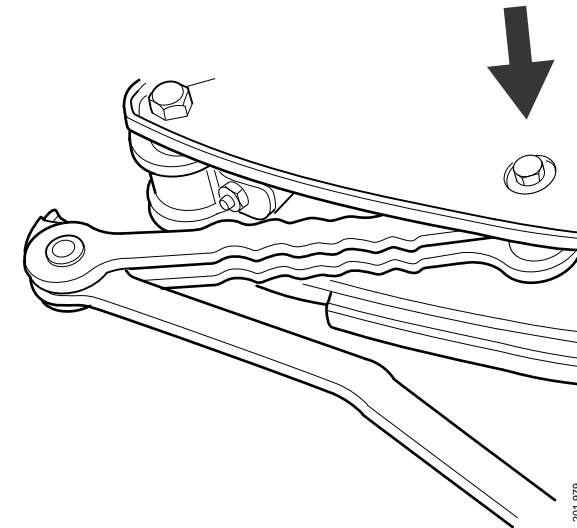
8. Clamp bolt and lower steering wheel shaft universal joint from power steering gear input shaft.



201 978

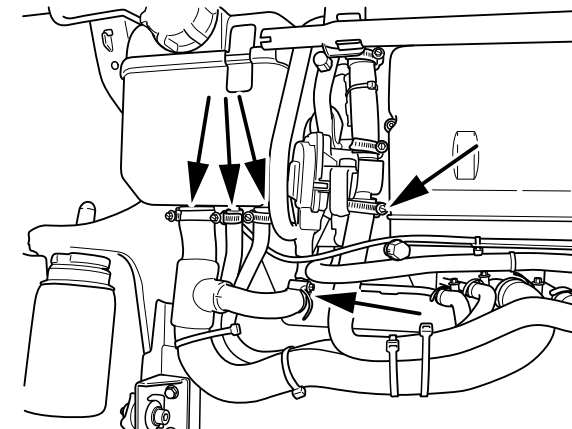


9. Cab tilt stop in upper bracket.

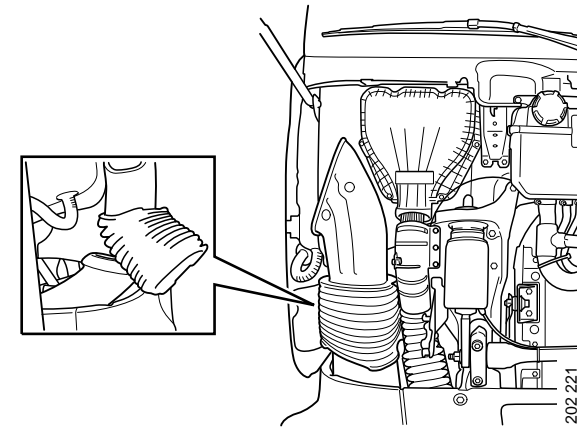


10. Hoses from the underside of the expansion tank and at the water valve.

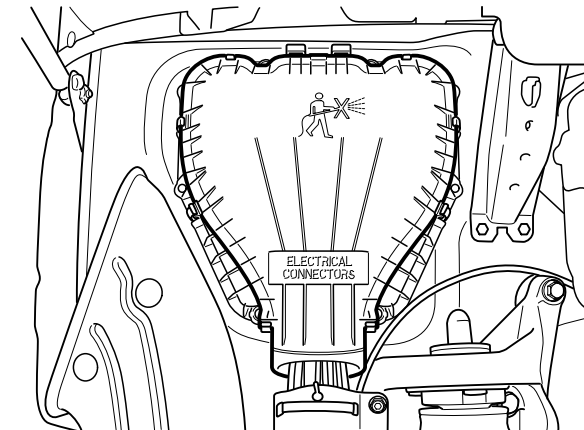
11. AC pipe at the receiver dryer.



12. Bellows from the air intake.



13. Central electric unit cover.



14. All connectors, screws for attachment of cable harness in the cab brackets and ground connections.

Follow the instructions below to lift off the cab:

1. Fit the lifting tool 99 242 and secure the lifting arms using a chain as illustrated.



**WARNING!**

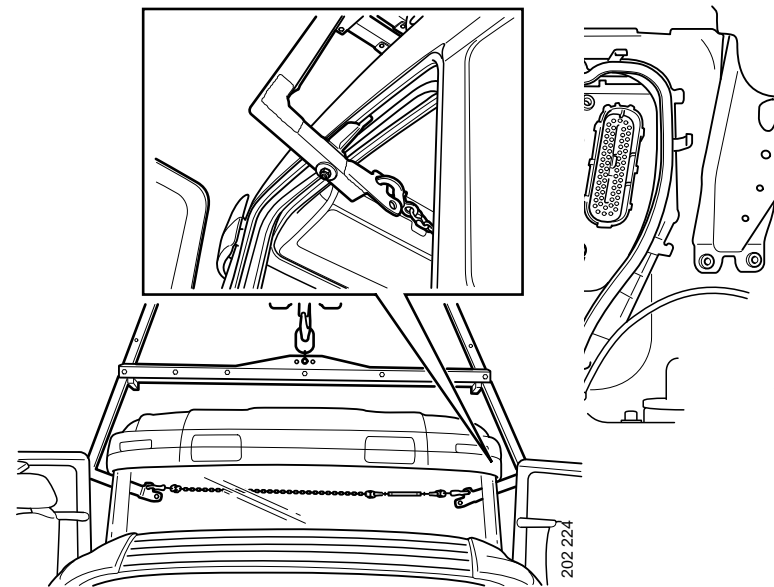
Make sure no one is inside or nearby the cab when it is lifted off.

2. Raise the overhead hoist until the cab is hanging in the lifting tool. The cab must hang horizontally.

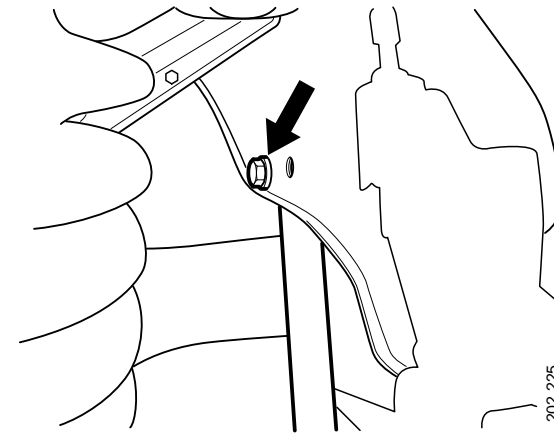


**WARNING!**

If the cab is not hanging horizontally; adjust the lifting tool in the door opening to achieve equilibrium when lifting the cab.



3. Remove the upper attachment of the cab tilt cylinder.



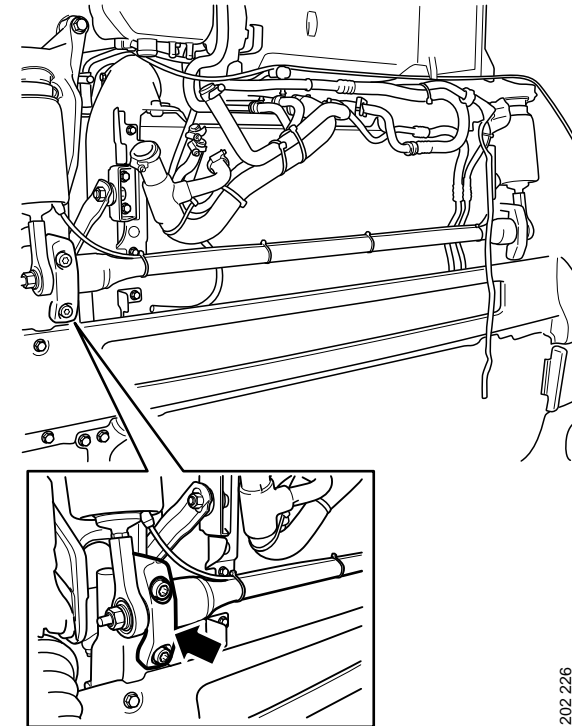
4. Remove the caps on the anti-roll bar.

**Note:**

Check that the anti-roll bar follows along when the cab is lifted off.

---

5. Lift off the cab.



202 226