

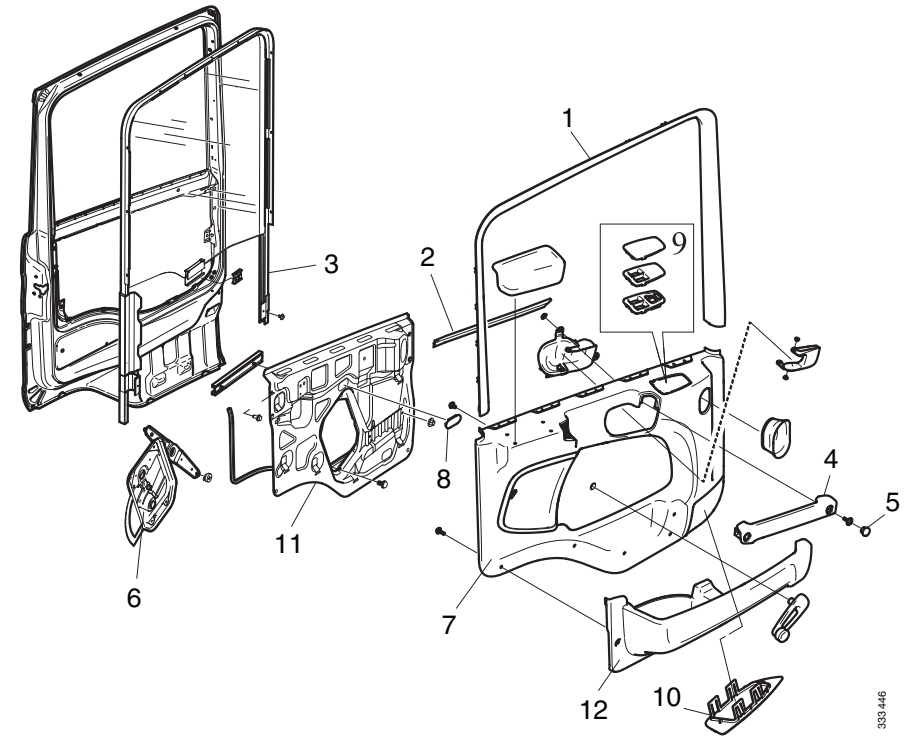
Work description

1. Remove the blanking pieces (5) and the armrest (4).
2. Undo the door moulding (1).

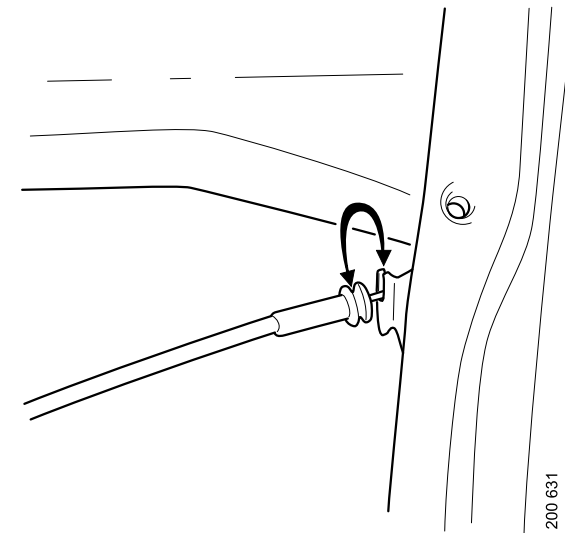
! IMPORTANT!

The door moulding must be lifted upwards as the hooks on the lower edge will otherwise come off.

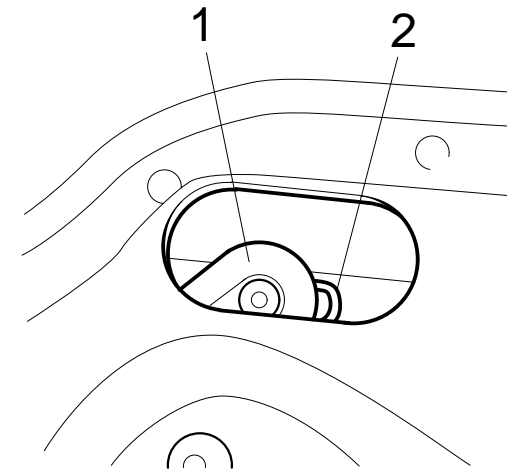
3. Remove the scraper strip (2).
4. Prise off the switch panel (9) and the boarding step lighting (10) and disconnect the connectors.



5. Unhook the opening cable on the back of the door trim panel (7).
6. Lift the door trim panel upwards and outwards.
7. Remove the blanking piece (8).



8. Wind down the door window, so that the window winder arm (6) is visible in the hole where the blanking piece was fitted.



200 625

9. Suspend the door window with suction cups to prevent it from sliding down.
10. Remove the locking clamp.
11. Detach the window winder arm.
12. Remove the door panel retaining screws (11).
13. Lift the door panel upwards and outwards, and push at the same time the door lock opening cable through the panel.
14. Drill out the pop rivets in the door window guide rail (3), and remove the screws.
15. Lift out the guide rail and door window from the door.

