

General

Applies to the ZF Transmatic gearbox

Tools

Examples of suitable tools from Scania:

Part number	Designation
587 496	Vehicle lift
587 313	Gearbox jack
587 500	Machine lift
98 401	V block
98 405	Bracket for fixture beam
99 309	Turning tool
99 424	Fixture

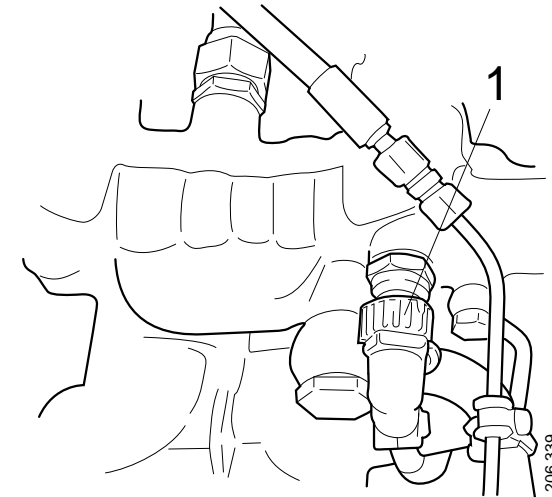
Work description

Working from above

! IMPORTANT!

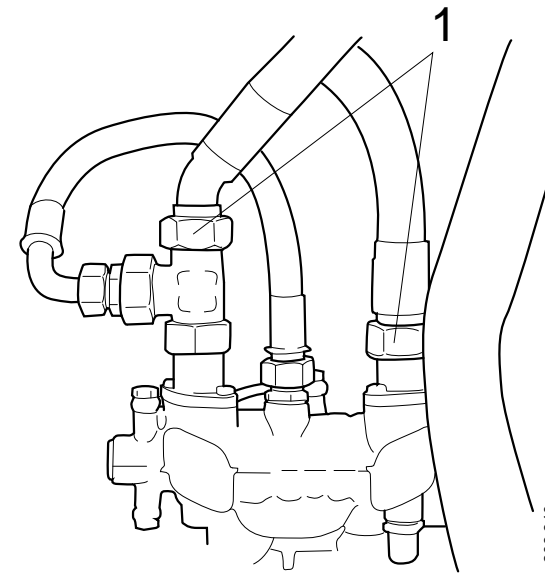
The instructions concerning cab tilting must be followed.

1. Disconnect all power sources from the vehicle.
2. Remove the connector for T1011.
3. Remove the oil filler hose.



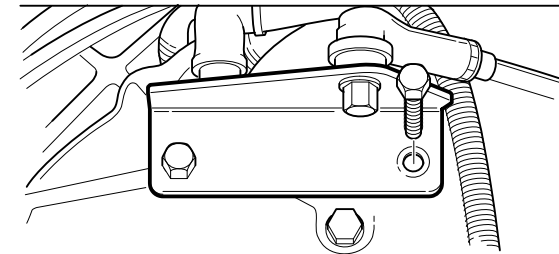
1. Connector for T1011

4. Undo oil hoses (2 off) from the gearbox.
2. Remove the clamps (2 off) for the pressure oil pipe for the additional compressor.



1. *Oil hoses*

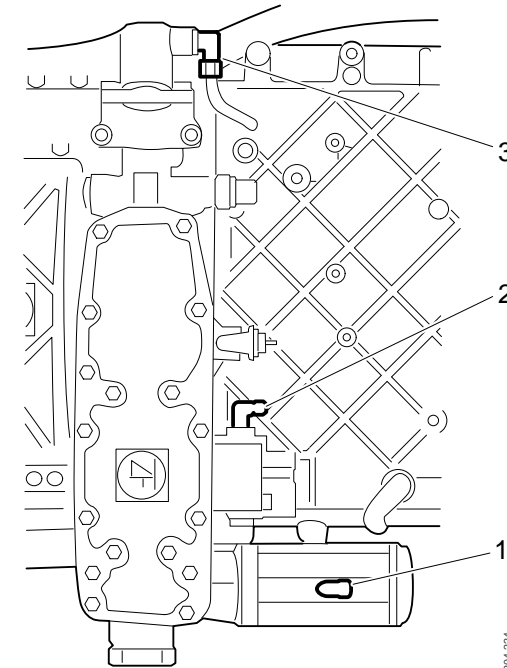
3. Detach the torque rod bracket from the gearbox.



Torque rod bracket

204-209

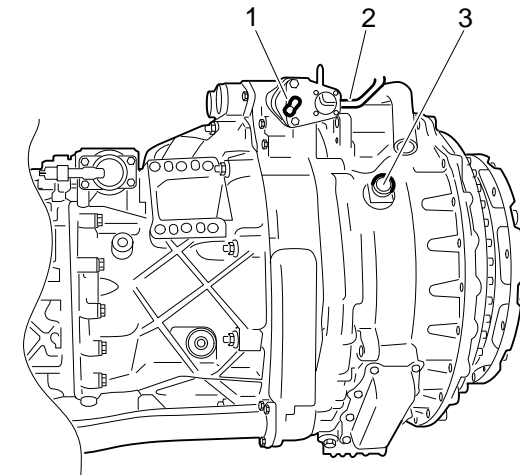
4. Remove the gearshift servo air connections, neutral position valve and gear lock-out.



1. Air connection for gearshift servo
2. Air connection for neutral position valve.
3. Air connection for gear lockout.

20M 224

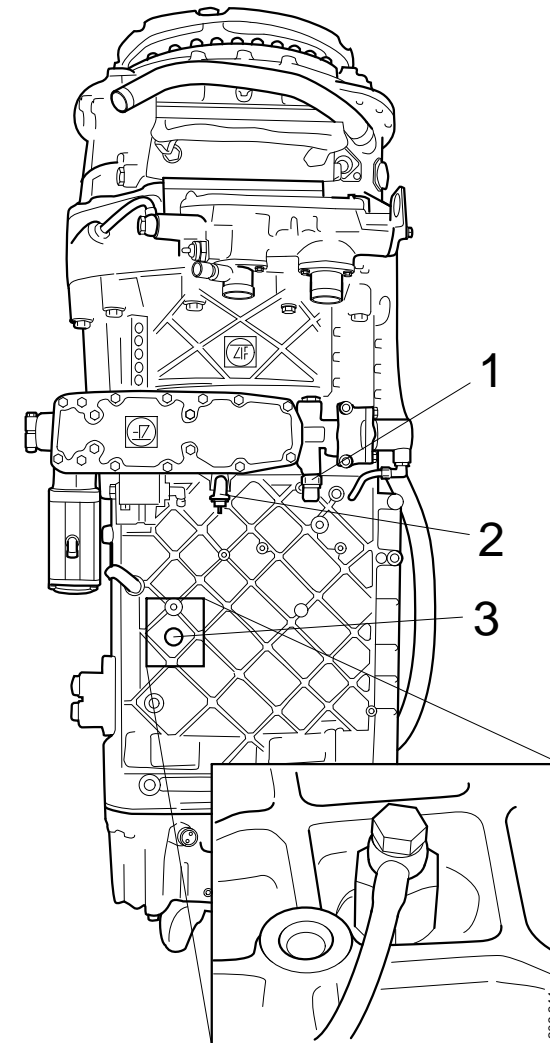
5. Remove the air connection for the proportional valve and the ZVK switch.
6. Remove the large connector.



204 210

1. *Air connection for proportional valve*
2. *Large connector*
3. *ZVK switch*

7. Remove the reversing light switch, neutral position sensor and air connection.
8. Remove the upper nuts (4 off) in the flywheel housing.



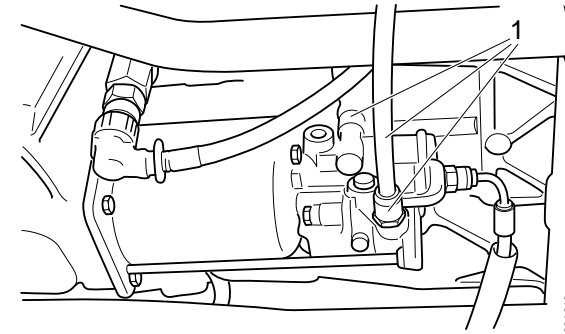
1. Reversing light switch
2. Neutral position sensor
3. Air connection

Work from below

1. Raise the vehicle with the vehicle lift 587 496. Use one lifting point for each wheel.

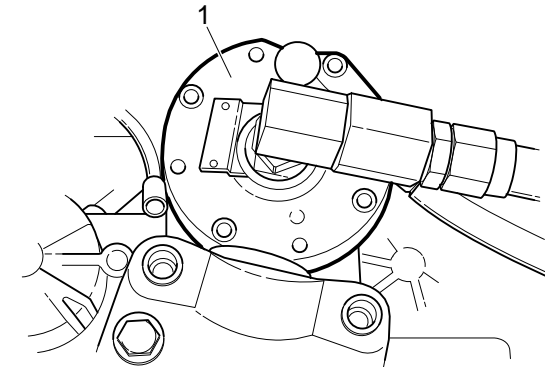
Then remove the parts in the order below:

2. Noise shield beneath the engine and gearbox.
3. Cable bracket next to the starter motor.
4. Starter motor (3 screws).
5. Plug for access hole.
6. Remove the screws (10 off) which attach the torque converter to the flywheel.
7. Propeller shaft.
8. Connector next to the clutch servo.
9. Clutch servo and air connections.



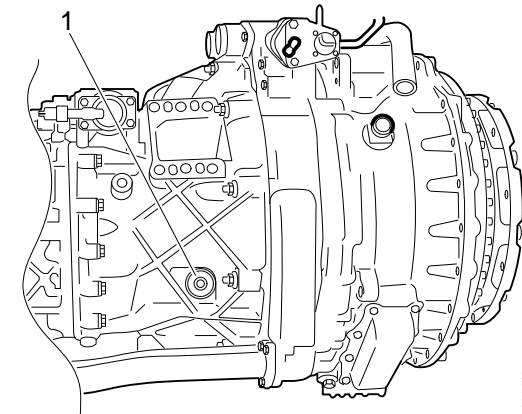
1. Air connections

- 10. Hydraulic pump.
- 11. Connector for speedometer sensor.



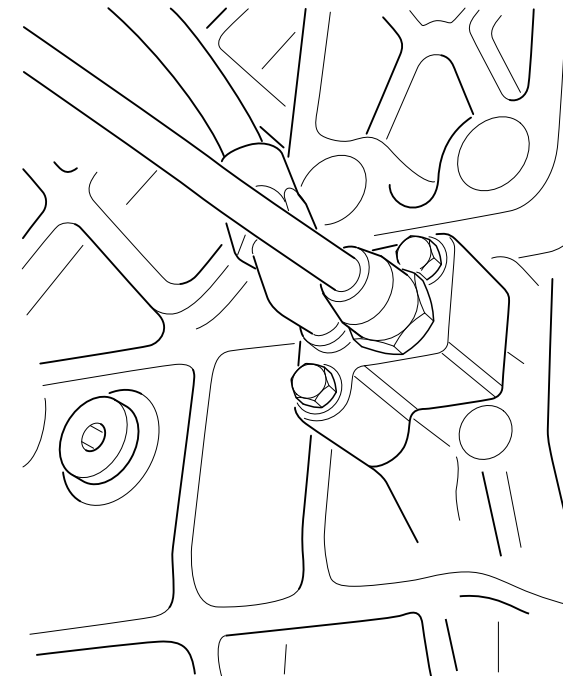
1. Hydraulic pump

- 12. Connector for the inductive turbine sensor.



1. Inductive sensor

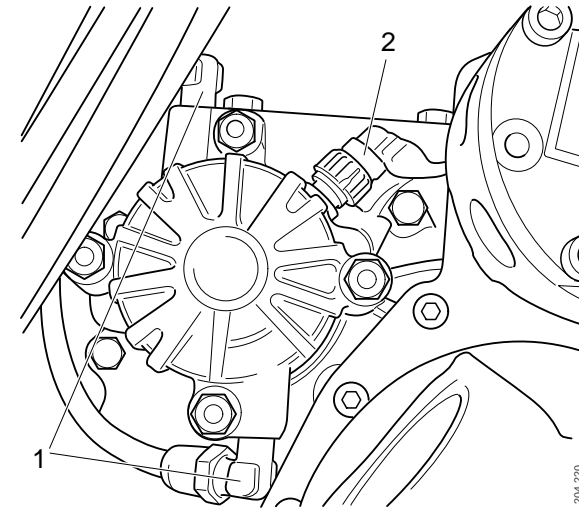
13. Air connection for splitter valve on the left side of the gearbox.



Air connection for splitter valve

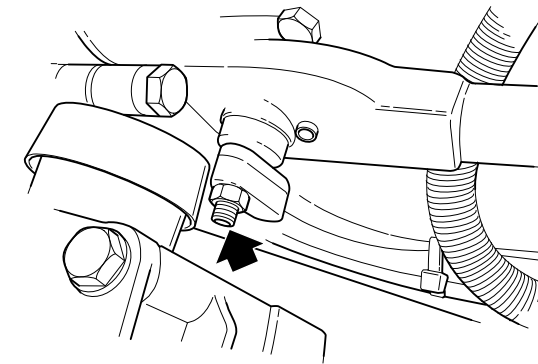
204 244

14. Air connections (2 off) and the connector for the range valve.



- 1. Air connections
- 2. Connectors

15. Detach the gear control from the left-hand frame member. Use a Torx wrench as a counterhold.



Gear control

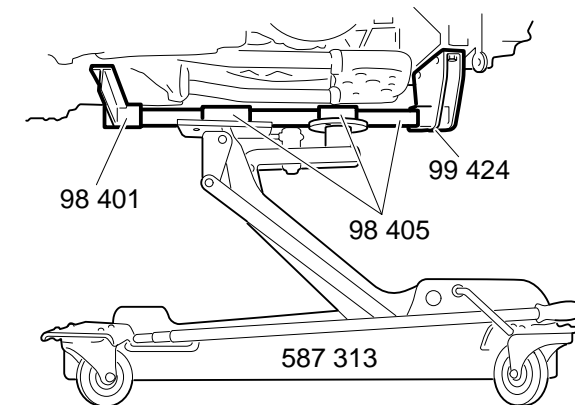
Continue dismantling in the following order:

1. Position the gearbox jack 587 313 with appropriate fixtures under the gearbox. Screw fixture 99 424 onto the gearbox.



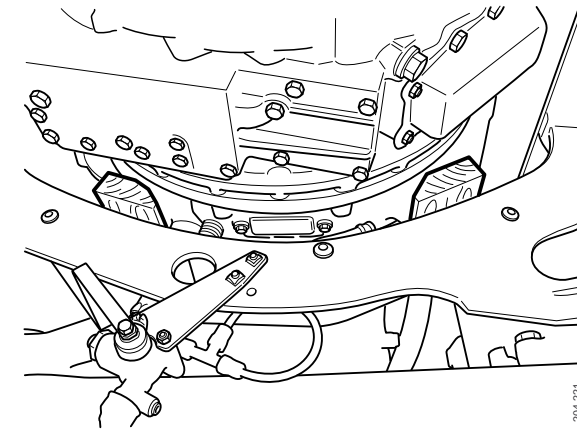
WARNING!

Always use two brackets on the fixture beam to prevent the gearbox from falling down.



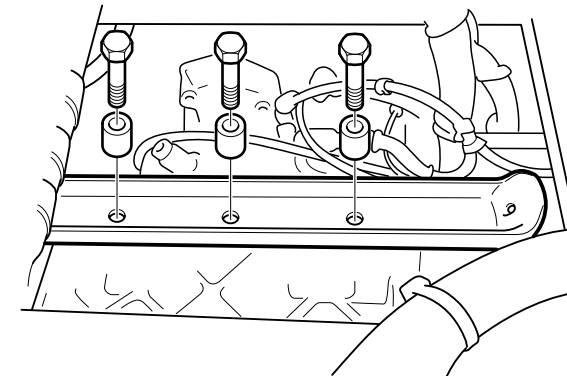
Gearbox jack and fixtures

2. Place a couple of wooden blocks on the beam under the engine as illustrated.



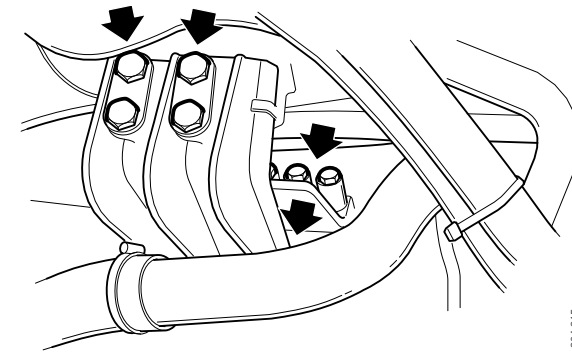
Wooden blocks under the engine

3. Raise the gearbox to release tension and undo the rear gearbox bracket from the gearbox.



The rear gearbox bracket

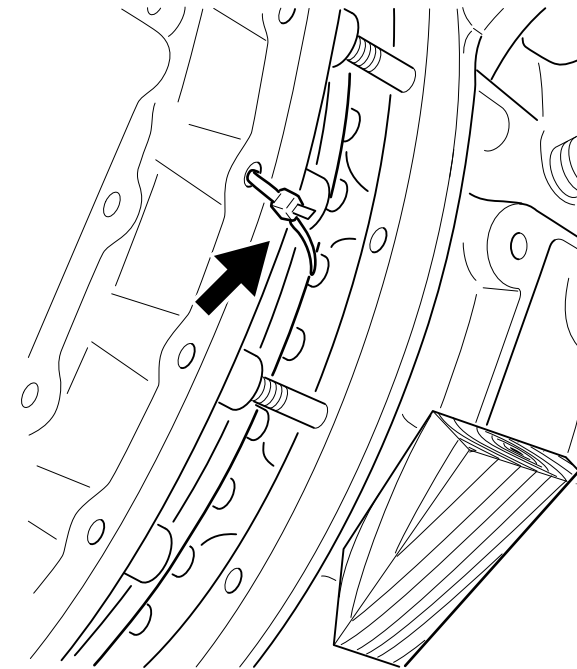
4. Remove the front gearbox brackets (4 upper and 6 lower screws on each bracket).
This must be done from above.
5. Lower the engine and gearbox onto the beam.
6. Remove the remaining nuts (8 off) in the flywheel housing.



Front gearbox bracket

204 215

7. Pull the gearbox out slightly and fit cable ties on the right and left-hand sides of the gearbox to hold the torque converter in place.
8. Remove the gearbox. Make sure that hoses and electrical cables come free.



204 246