

**Click on any tab for additional information.**

**The 'Main Page' tab will take you back to the Main Welcome Page.**

**Main Page**

**Installing Acrobat Reader**

**Creating Shortcuts from  
the CD**

**Downloading CD onto  
your hard drive**

**Troubleshooting**

## Installing Acrobat Reader

### From the CD

1. Insert CD into CD-Drive
2. Click to install [Acrobat Reader \(Version 6.0.1\)](#)
3. The installation program will guide you through the setup process and install Acrobat 6.0.1. This program will also create a shortcut on your desktop to launch the Reader

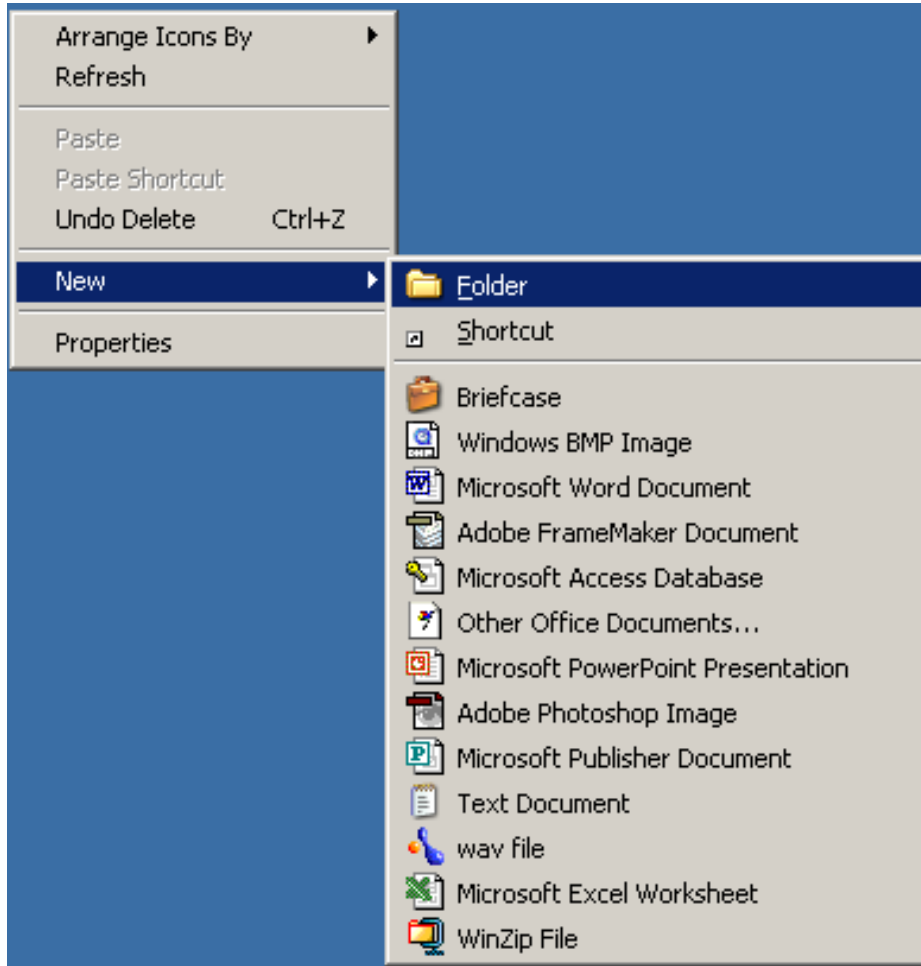
### Downloading Acrobat Reader from the Adobe Website

Alternately you may visit <http://www.adobe.com/products/acrobat/readstep2.html> to download the latest version of the reader.

After accessing the Adobe site, exit out of the Acrobat you are currently running and eject the CD. Follow the on-screen instructions at the Adobe site, then insert the CD again to view publications with the newly installed version of Acrobat.

## Instructions for using Acrobat 5.0 Reader in conjunction with CD

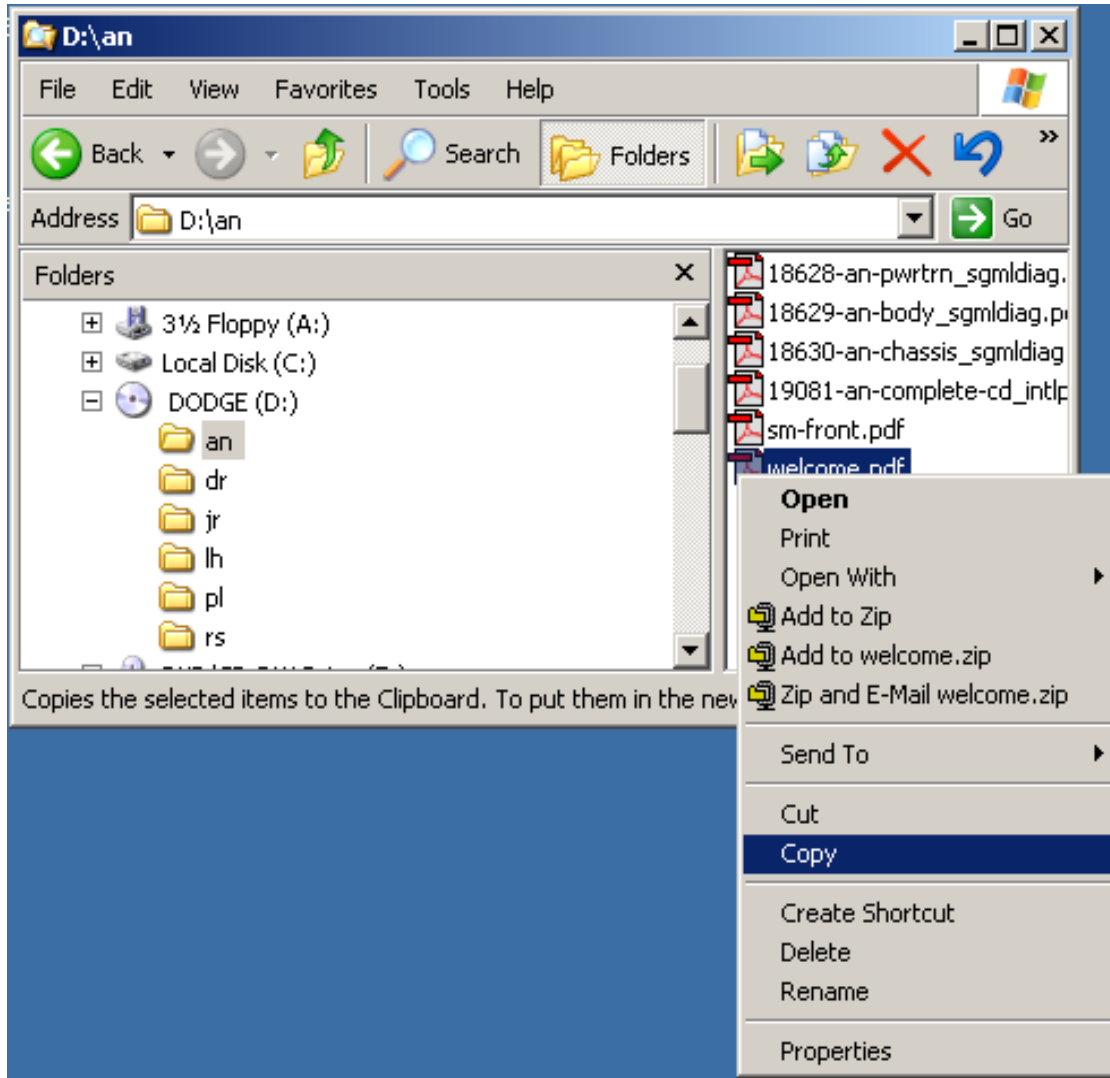
1. Create a folder on your desktop labeled with the model year.  
(Right-click on Desktop and select New → Folder then type "2005" or the correct Model Year and press the "Enter" key)



2. Insert CD into CD-Drive
3. Launch Windows Explorer by right-clicking on the "Start Button" (start button is located in the lower left corner of your screen) and selecting "Explore".

## Instructions for using Acrobat 5.0 Reader in conjunction with CD

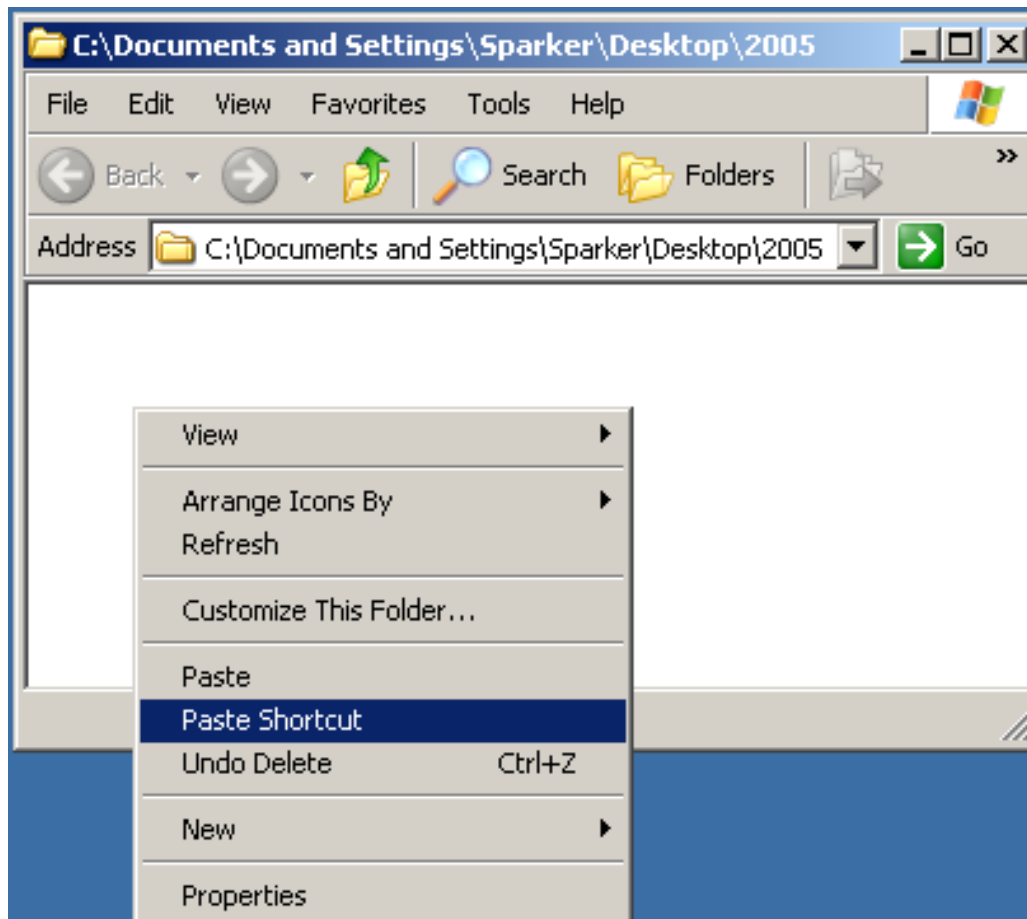
4. Navigate to your CD drive. Click the arrow to the left of the CD drive to view the folders beneath. Click once on the first book folder to view the contents of that folder. In the right-hand pane of the explorer window, right-click on the "welcome.pdf" and drag down to "Copy"



5. Now double-click on the desktop folder you created to open it

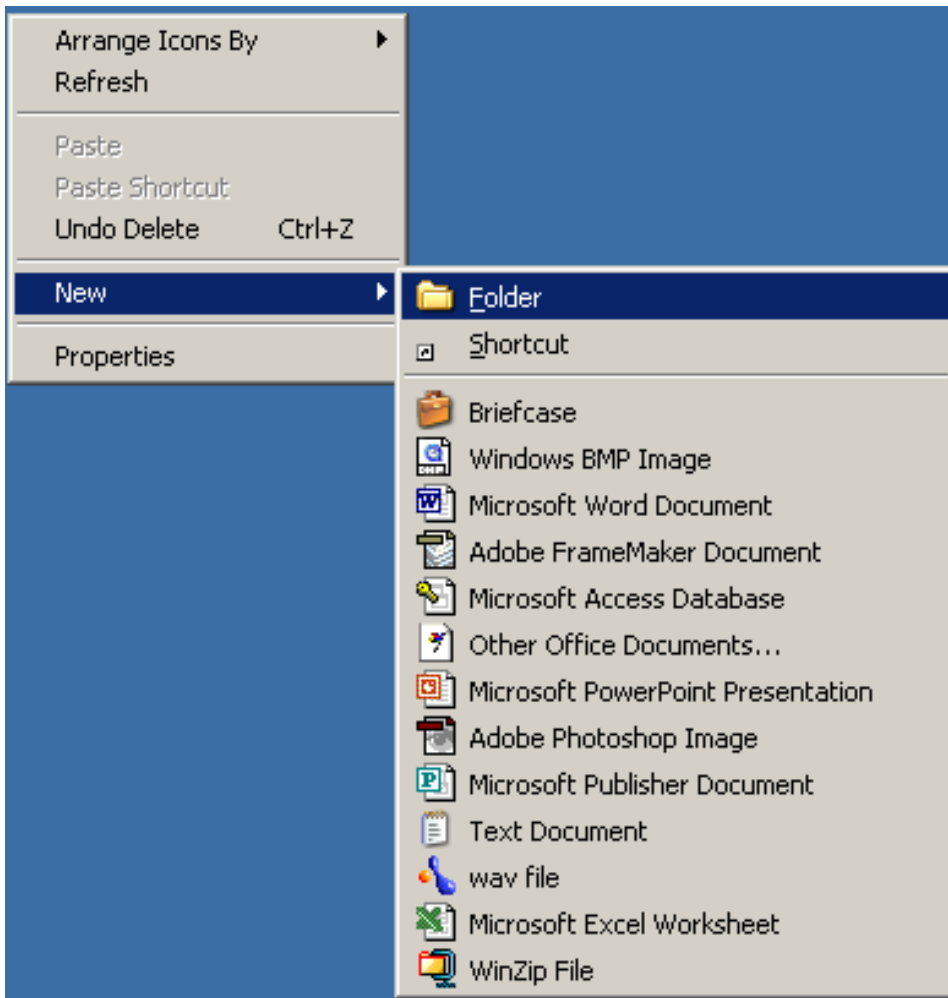
## Instructions for using Acrobat 5.0 Reader in conjunction with CD

6. Right-click within this window and select "Paste Shortcut"



## Instructions for using Acrobat 5.0 Reader and copying content to your hard drive

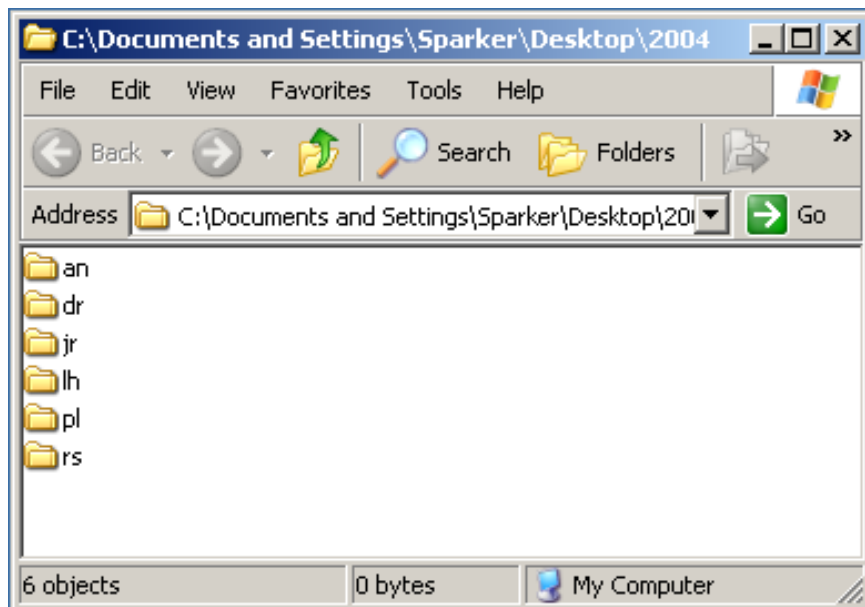
1. Create a folder on your desktop labeled with the model year.  
(Right-click on Desktop and select New → Folder then type "2005" and press the "Enter" key)



2. Insert CD into CD-Drive
3. Launch Windows Explorer by right-clicking on the "Start Button" (start button is located in the lower left corner of your screen) and selecting "Explore".

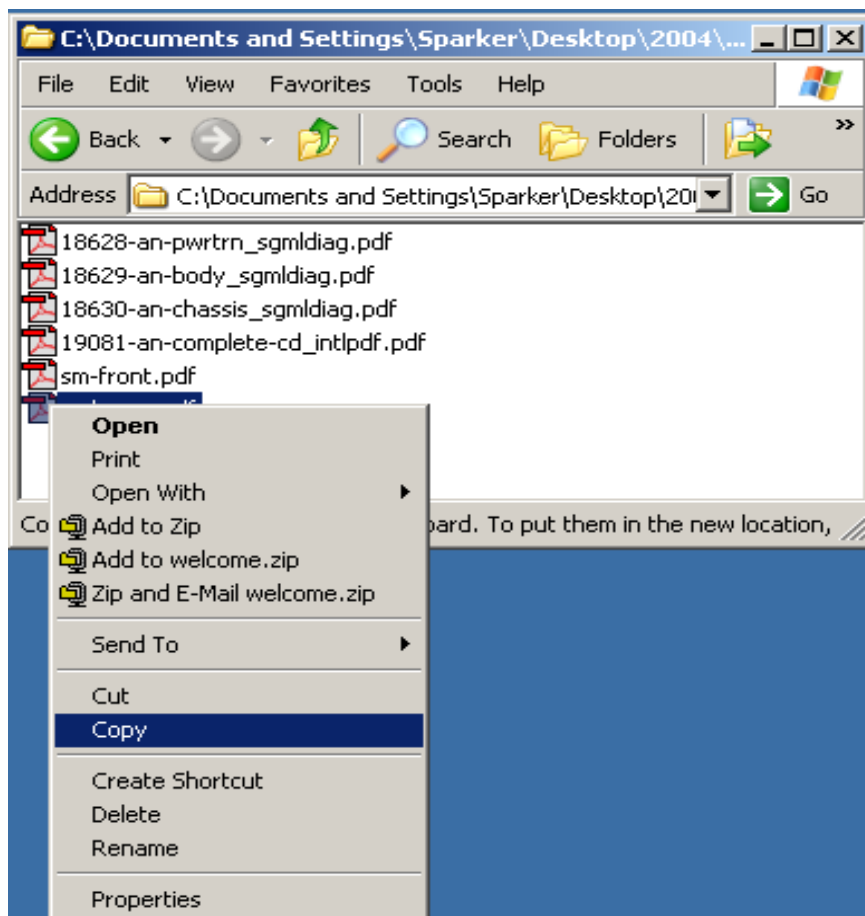
## Instructions for using Acrobat 5.0 Reader and copying content to your hard drive

4. Select all folders and drag them to your newly created desktop folder



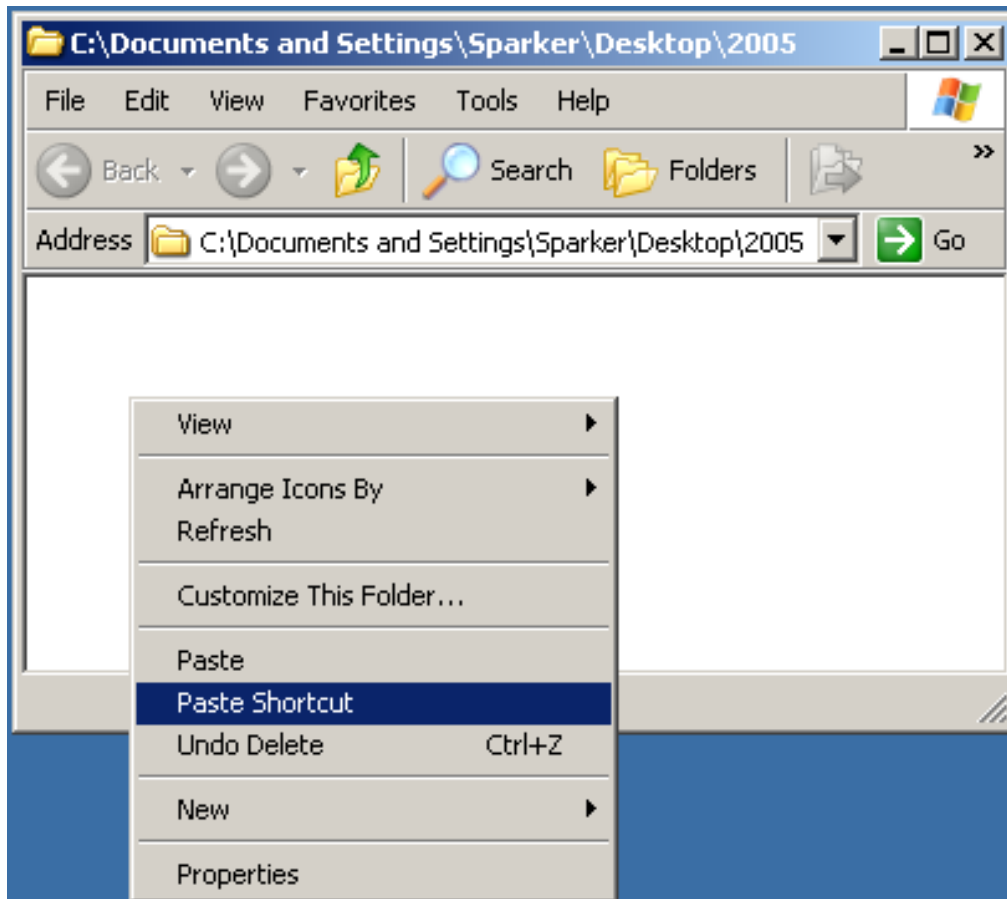
5. Now open each folder and select the "welcome.pdf"

6. Right-click with your mouse and drag down to "Copy"



## Instructions for using Acrobat 5.0 Reader and copying content to your hard drive

7. Right-click within this window and select "Paste Shortcut"



8. Rename shortcut to Model Year-Model (2005-an.pdf)

9. Repeat for each manual. This will launch the default Acrobat Reader from your hard drive - the CD no longer has to be in the CD drive.



## Troubleshooting

### The installation ran okay but now I can't access my data.

1. Is the correct CD in the drive?

*The CD must remain in the drive in order to view the content. If you wish to copy the content of the CD to your hard drive, [click here](#) and follow the instructions.*

2. Do you have more than one CD drive?

*The CD must be in the 'first' CD drive as the installation program stops when it sees the first CD drive. This could be your D or E drive.*

### Acrobat Reader 5.0 launches and the 'welcome.pdf' is displayed but I can't access any other data.

*Using your mouse, move over the document until the cursor changes from an open hand to a pointing finger. This indicates where the link is located. Click in this area to view the next part of the publication.*

### Acrobat Reader 5.0 launches and the 'welcome.pdf' is displayed but the text is too small to read.

*This issue had been reported by a small number of users operating Windows Millenium or 'ME'. The view can be adjusted by choosing one of the options located under the 'View' Menu.*